



## DECO

felt wall

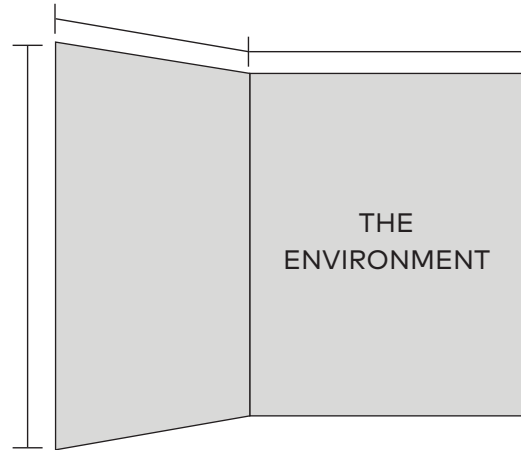


# HOW TO SPECIFY

Re-think, re-design, reveal what a wall can be with Deco. The precise geometric pattern adds intrigue to any space, while also exposing a carefully curated secondary color. Reduce unwanted noise and echo with Deco acoustic felt walls.

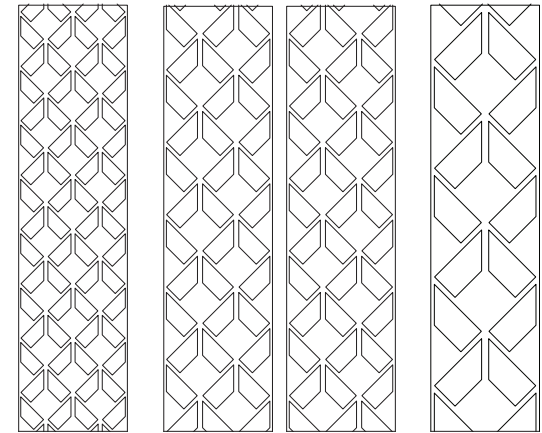
Available in over 30 colorways.

## 01 SPECS



Tell us about your space, the design, and dimensions.

## 02 PATTERN SIZE



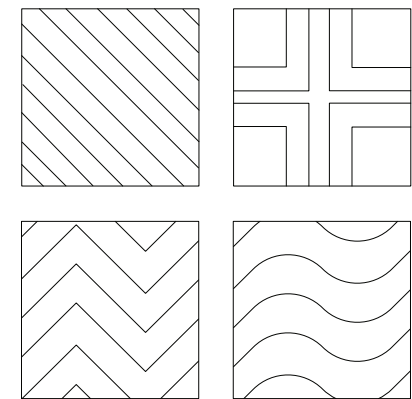
What size does your design call for? Deco is offered in four pattern sizes.

## 03 COLORWAYS



Over 50 standard colorways. What's your color? (See page 6)

## 04 MAKE IT YOUR OWN!



Customize your pattern

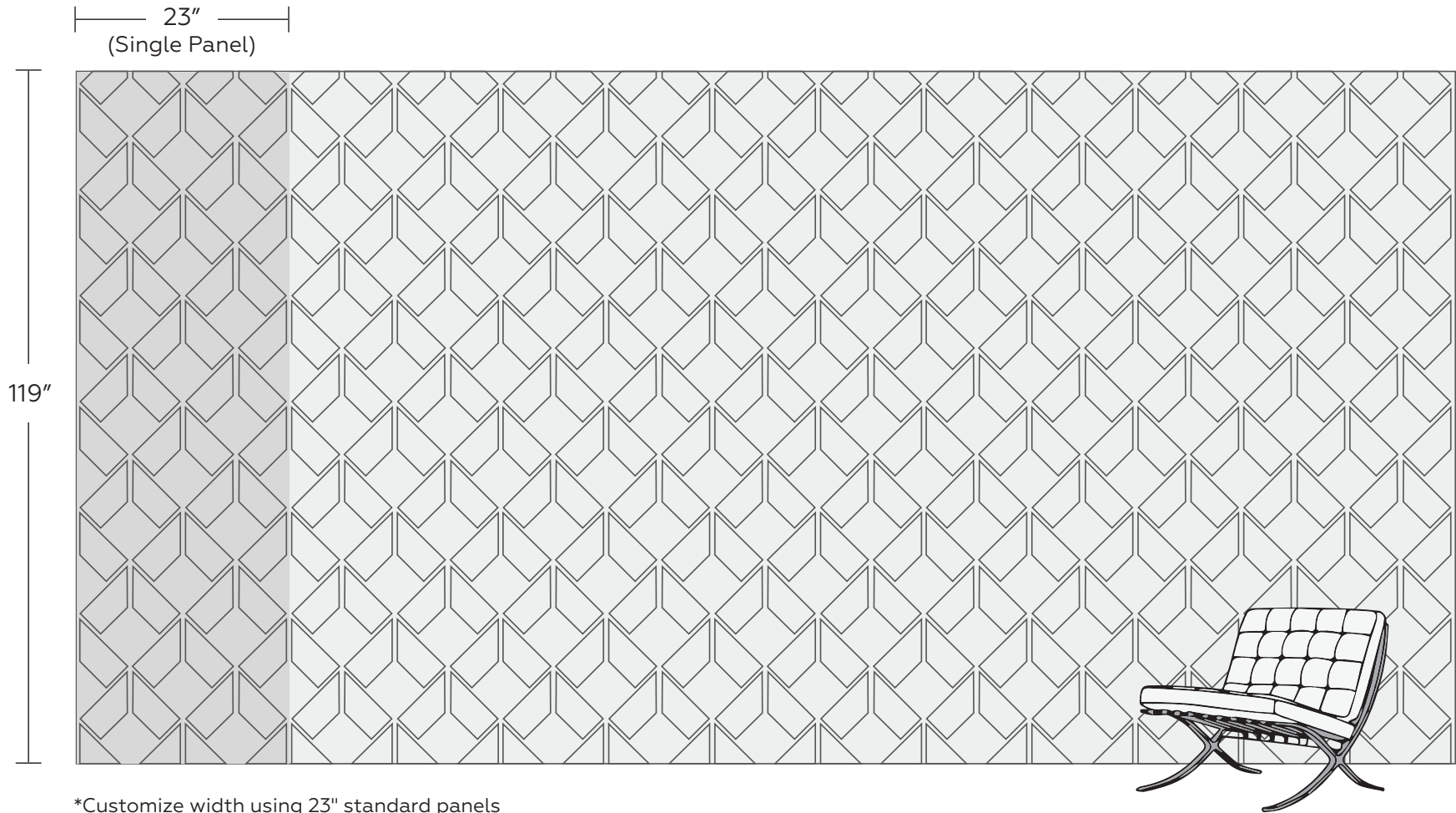


# PRODUCT SPECIFICATIONS

## STANDARD DIMENSIONS

Single Panel            23"W x 119"H

Felt Thickness        3/8"



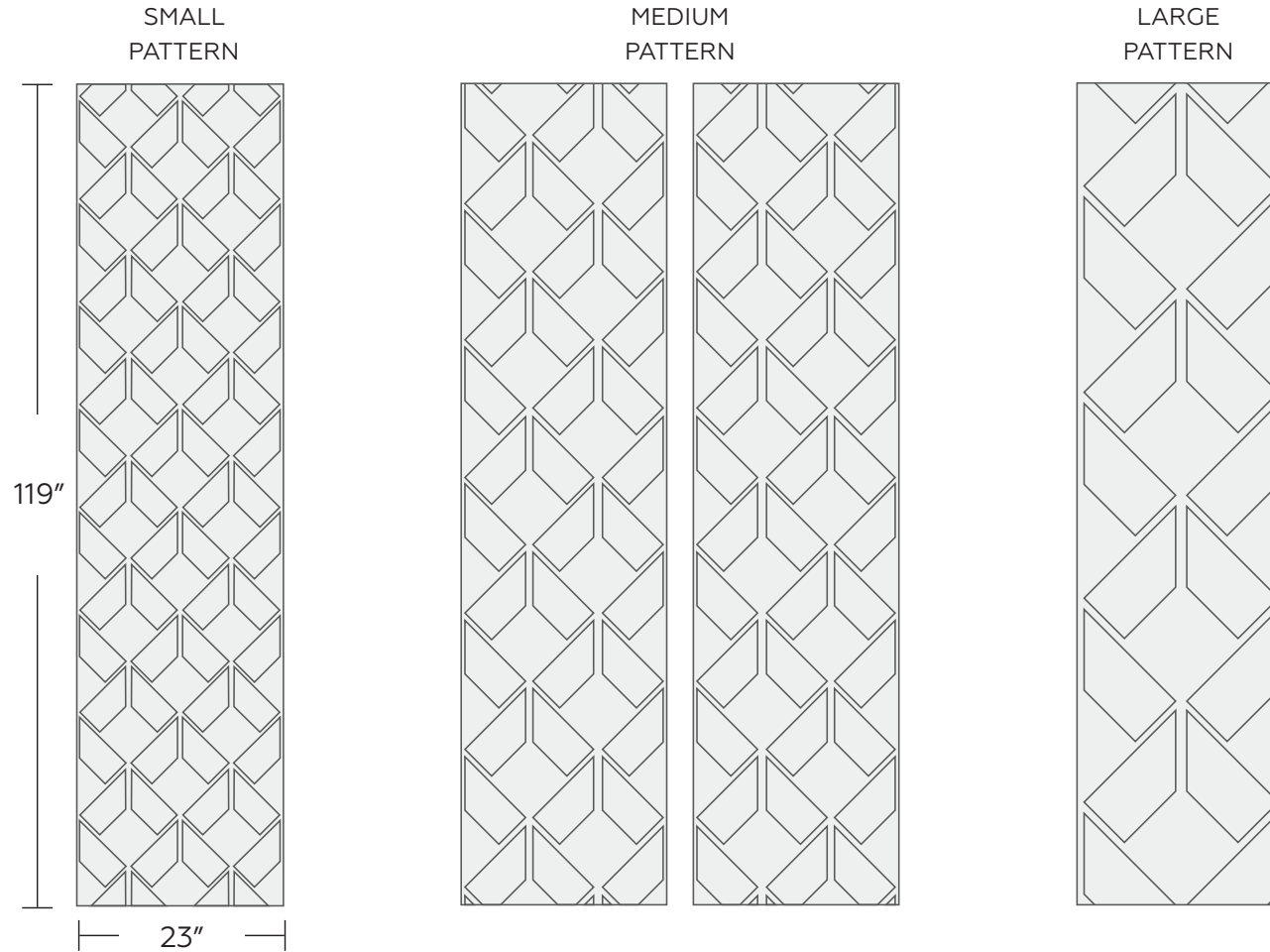
\*Customize width using 23" standard panels



# PRODUCT SPECIFICATIONS

## PATTERN SIZES

Deco comes in three standard pattern sizes.





# TECHNICAL SPECIFICATIONS



## Absorption

Standard: .32 NRC

(subject to mounting conditions)

## Fire Rating

ASTM E84 Class A

## Warranty

Two (2) Years

## VOC

ASTM D5116 Compliant

## Material

PET Felt: 100% polyester fiber

## Maintenance

Vacuum clean to remove dust and debris

## Sustainability

**MPS 9mm Acoustic Panels**  
MPS LLC

**Final Assembly:** Plano, Texas, USA  
**Life Expectancy:** 50 Year(s)  
**End of Life Options:** Salvageable/Reusable in its Entirety, Take Back Program (Plano, TX), Recyclable (100%)

**Ingredients:**  
Polyethylene Terephthalate

**Living Building Challenge Criteria:** Compliant

**I-13 Red List:**  
 LBC Red List Free      % Disclosed: 100% at 100ppm  
 LBC Red List Approved      VOC Content: Not Applicable  
 Declared

**I-10 Interior Performance:** CDPH Standard Method v1 2-2017  
**I-14 Responsible Sourcing:** Not Applicable

MPS-0001  
EXP. 01 NOV 2026  
Original Issue Date: 2022

MANUFACTURER RESPONSIBLE FOR LABEL ACCURACY  
INTERNATIONAL LIVING FUTURE INSTITUTE™ [living-future.org/declare](http://living-future.org/declare)





# COLORS

MPS offers a range of over 50 curated colorways and woodgrains

## CURATED COLORWAYS

LINEN AVOCADO	GLEEFUL AVOCADO	LILY PAD	BASIL	CACTUS	TAUPE SAND	TURTLE AVOCADO	DRIZZLE	ARTICHOKE MARBLE	PARADISE AVOCADO	ROSEMARY SAGE
ASSURED MARBLE	SILDEN CREAM	CLOUD SAGE	GRAND CANAL KHAKI	HUNTER OCEAN	JADE DENIM	DELFT DENIM	STORM DENIM	SKY MARBLE	DEEP GRANITE	STILL EVERGREEN
SLATE IVORY	BLUE MARBLE	MYTHICAL SAGE	PINES IVORY	GROVE IVORY	HAZE GRAPHITE	UNDERSEA GRANITE	GARDEN WINE	ACIER SLATE	RIVER GRAPHITE	ALEXANDRITE EVERGREEN
SAND BISCUIT	COCOA CREAM	STUDIO SAND	BEIGE EARTH	COBBLE BISCUIT	BRANDYWINE KHAKI	ROJO SAND	SANGRIA	FIREWEED KHAKI	AMBER COFFEE	FRENCH MARBLE
ROSE IVORY	PEACH IVORY	GOLD SAND	ROGUE CREAM	ROSE WINE	BURGUNDY WINE	REDBUD OCEAN	PRESSED SAGE	PEPPERCORN GRANITE		



# ADDITIONAL COLOR OPTIONS

## WOODGRAINS



## SHADES by MPS™

Your design world revolves around color, so don't be limited by standard colors and outdated palettes. We've distilled years of testing into a three-tier system that protects print quality and design intent.

\*Some limitations apply. Consult your MPS acoustics expert to discuss your project.

RECOMMENDED	GUIDED CUSTOM	BESPOKE
<p><b>Signature Series</b></p> <p>Proven color. Perfect results.</p>	<p><b>Studio Collaboration</b></p> <p>Your color, guided by our expertise.</p>	<p><b>The Color Lab</b></p> <p>When your color needs to be one-of-a-kind.</p>



# MOUNTING OPTIONS

## TOOLS REQUIRED



Cutting tool



Steel straightedge



Drill



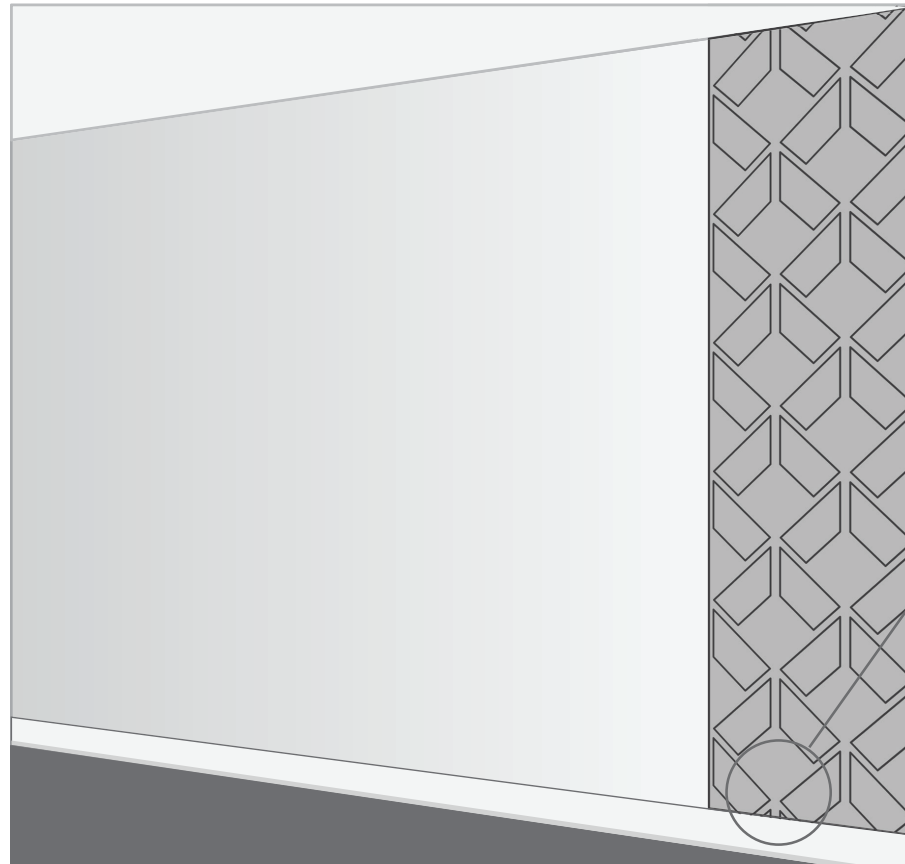
Hole saw



Construction adhesive

## DRY FIT

Before applying adhesive, dry fit the first panel to the wall.

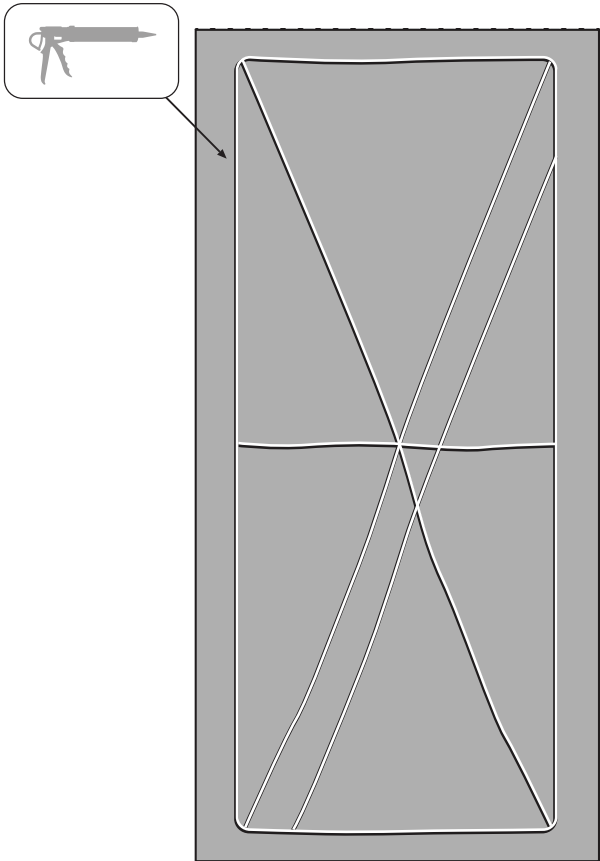


Note: to avoid irregularity, we recommend applying to the top of a baseboard.

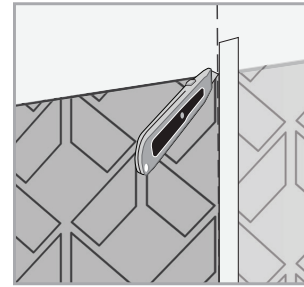


# INSTALLATION OVERVIEW

## APPLY CONSTRUCTION ADHESIVE

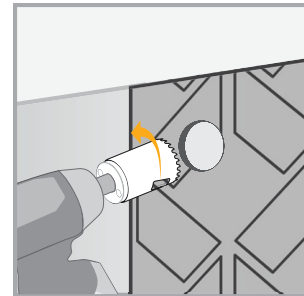


## TRIM AS REQUIRED



Trim panels along the end to fit using a straight edge and cutting tool.

## TRIMMING HOLES



When cutting a circular hole use a hole saw, and run it backwards to minimize pulling.