



## FRACTURED

felt wall

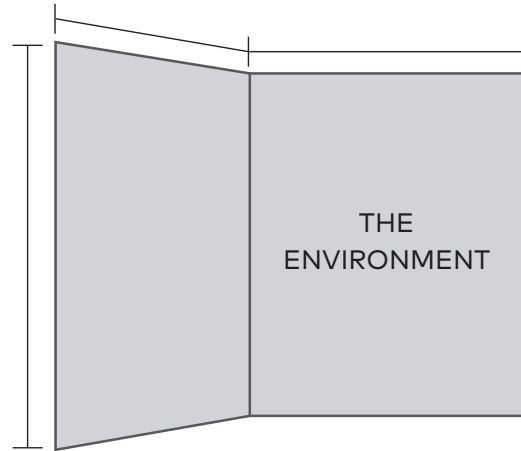




# HOW TO SPECIFY

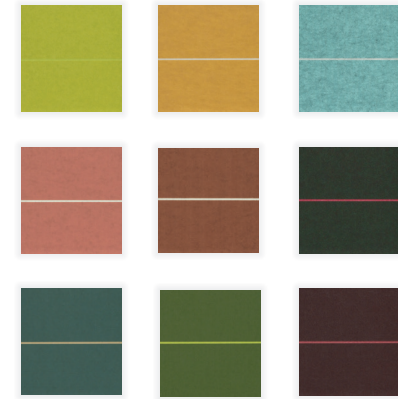
Re-think, re-design, reveal what a wall can be with Fractured. The precise v-cut lines add movement to any space, while also exposing a carefully curated secondary color.

## 01 SPECS



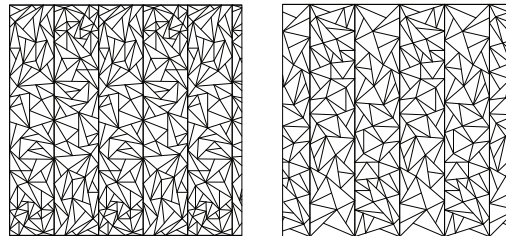
Tell us about your space, the design, and dimensions.

## 02 COLORWAYS



Over 50 standard colorways. What's your color?

## 03 PATTERN SIZES



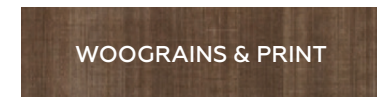
SMALL

LARGE

Fractured is offered in two pattern sizes, small and large.

## 04 MAKE IT YOUR OWN!

SHADES by MPS



Spec your own color, gradient, or woodgrain.

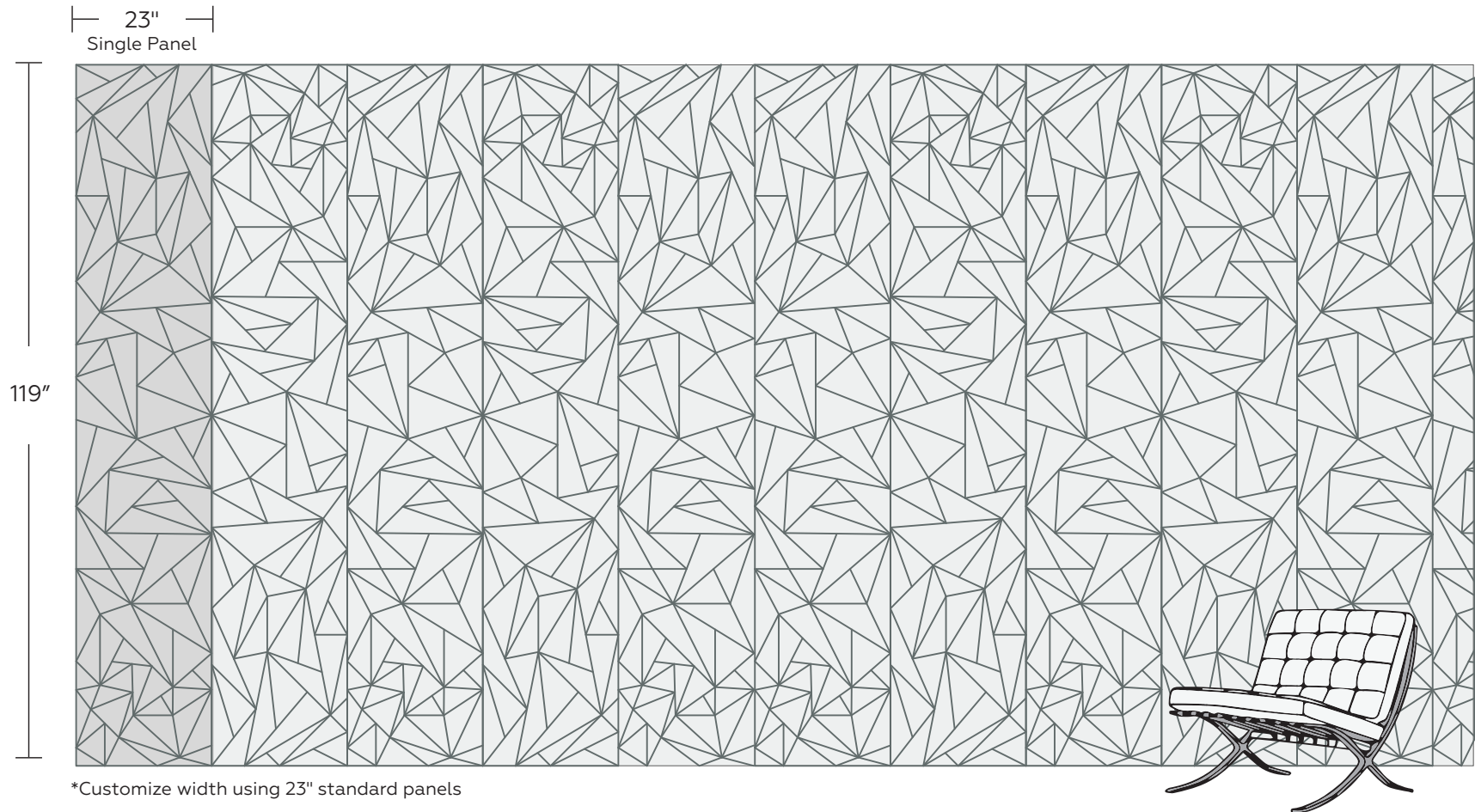


# PRODUCT SPECIFICATIONS

## STANDARD DIMENSIONS

Single Panel                23"W x 119"H

Felt Thickness            3/8"



\*Customize width using 23" standard panels



# TECHNICAL SPECIFICATIONS



## Absorption

Standard: .32 NRC

(subject to mounting conditions)

## Fire Rating

ASTM E84 Class A

## Warranty

Two (2) Years

## VOC

ASTM D5116 Compliant

## Material

PET Felt: 100% polyester fiber

## Maintenance

Vacuum clean to remove dust and debris

## Sustainability

**MPS 9mm Acoustic Panels**  
**MPS LLC**

**Final Assembly:** Trenton, Texas, USA  
**Life Expectancy:** 50 Year(s)  
**End of Life Options:** Salvageable/Reusable in its Entirety, Take Back Program (Trenton, TX), Recyclable (100%)

**Ingredients:**

**MPS 9mm PET:** Polyethylene Terephthalate

**Living Building Challenge Criteria:** Compliant

**I-13 Red List:**

<input checked="" type="checkbox"/> LBC Red List Free	% Disclosed: 100% at 100ppm
<input type="checkbox"/> LBC Red List Approved	VOC Content: Not Applicable
<input type="checkbox"/> Declared	

**I-10 Interior Performance:** CDPH Standard Method v1.2-2017  
**I-14 Responsible Sourcing:** Not Applicable

MPS-0001  
EXP. 01 NOV 2025  
Original Issue Date: 2022

MANUFACTURER RESPONSIBLE FOR LABEL ACCURACY  
INTERNATIONAL LIVING FUTURE INSTITUTE™ [living-future.org/declare](http://living-future.org/declare)





# COLORS

MPS offers a range of over 50 curated colorways and woodgrains

## CURATED COLORWAYS

LINEN AVOCADO	GLEEFUL AVOCADO	LILY PAD	BASIL	CACTUS	TAUPE SAND	TURTLE AVOCADO	DRIZZLE	ARTICHOKE MARBLE	PARADISE AVOCADO	ROSEMARY SAGE
ASSURED MARBLE	SILDEN CREAM	CLOUD SAGE	GRAND CANAL KHAKI	HUNT OCEAN	JADE DENIM	DELFT DENIM	STORM DENIM	SKY MARBLE	DEEP GRANITE	STILL EVERGREEN
SLATE IVORY	BLUE MARBLE	MYTHICAL SAGE	PINES IVORY	GROVE IVORY	HAZE GRAPHITE	UNDERSEA GRANITE	GARDEN WINE	ACIER SLATE	RIVER GRAPHITE	ALEXANDRITE EVERGREEN
SAND BISCUIT	COCOA CREAM	STUDIO SAND	BEIGE EARTH	COBBLE BISCUIT	BRANDYWINE KHAKI	ROJO SAND	SANGRIA	FIREWEED KHAKI	AMBER COFFEE	FRENCH MARBLE
ROSE IVORY	PEACH IVORY	GOLD SAND	ROGUE CREAM	ROSE WINE	BURGUNDY WINE	REDBUD OCEAN	PRESSED SAGE	PEPPERCORN GRANITE		

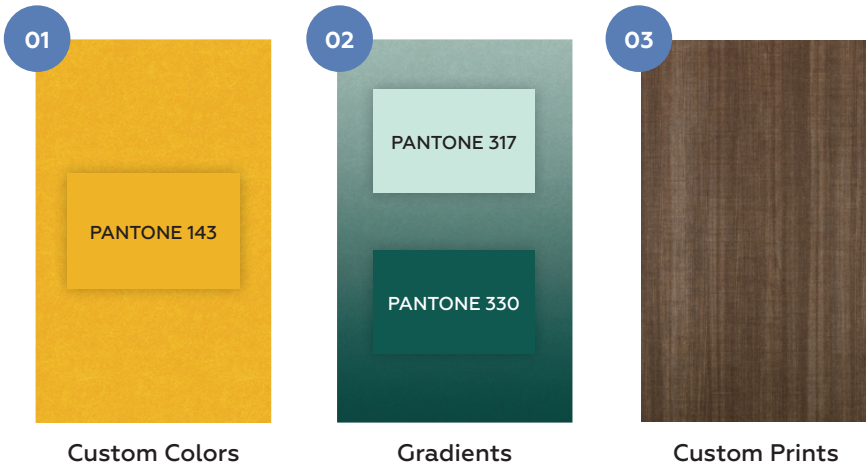


# COLORS

## WOODGRAINS



## SHADES by MPS



Your design world revolves around color, so don't be limited by standard colors and outdated palettes. SHADES offers Pantone options, full-color prints, and unique gradients. Flat or Heathered? Your choice.

\*Some limitations apply. Consult your MPS acoustics expert to discuss your project.



# INSTALLATION OVERVIEW

SEE INSTALL GUIDE FOR DETAILED STEPS

## TOOLS REQUIRED



Cutting tool



Steel straightedge



Drill



Hole saw



Construction adhesive

## DRY FIT

Before applying adhesive, dry fit the first panel to the wall.

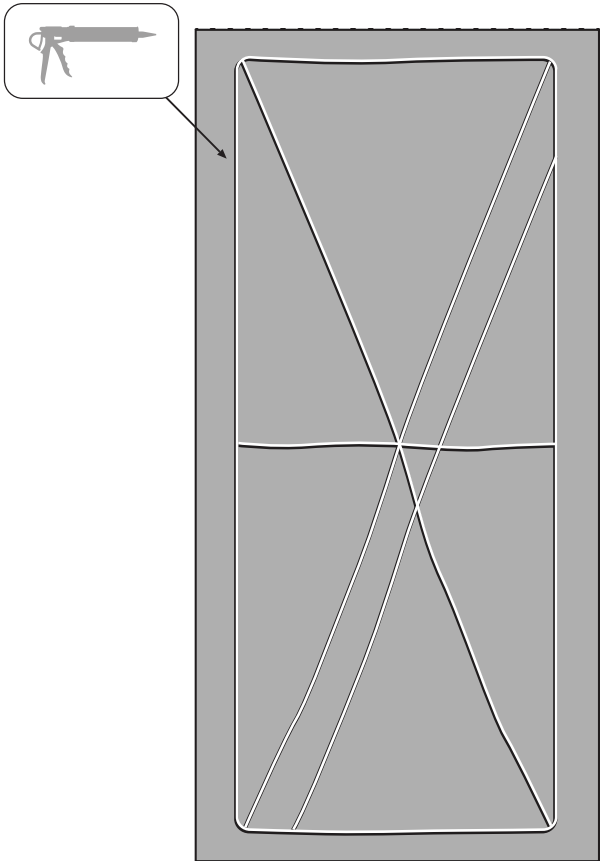


Note: to avoid irregularity, we recommend applying to the top of a baseboard.



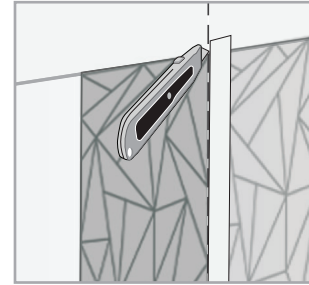
# INSTALLATION OVERVIEW

## APPLY CONSTRUCTION ADHESIVE



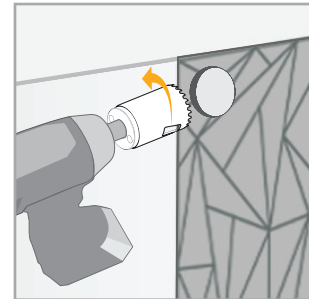
BACK OF PANEL

## TRIM AS REQUIRED



Trim panels along the end to fit using a straight edge and cutting tool.

## TRIMMING HOLES



When cutting a circular hole use a hole saw, and run it backwards to minimize pulling.