



WANDER

felt wall and ceiling



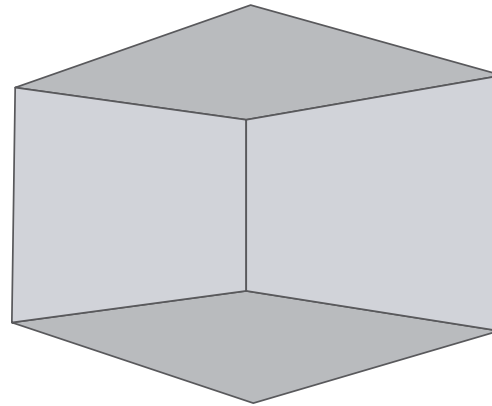


HOW TO SPECIFY

To ensure you get the most out of your space with Wander, follow this comprehensive guide on how to specify your acoustic felt wall.

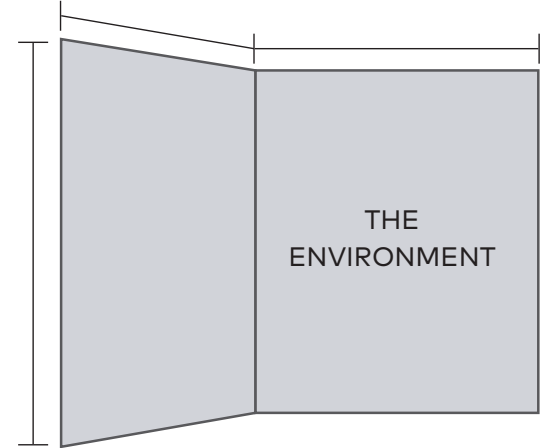
Whether you're an architect, designer, or facilities manager, this guide will walk you through the key considerations to tailor these panels to your unique needs.

01 APPLICATION



Choose your application. Wall, ceiling, or both.

02 SPECS



Tell us about your space, the design, and dimensions.

03 WOODGRAINS

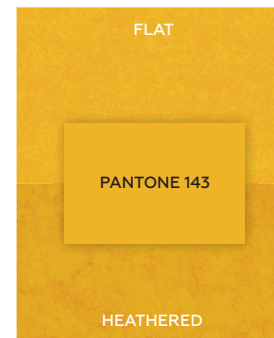


What's your woodgrain?
(See page 7)

04 MAKE IT YOUR OWN!



Standard MPS colors
(See page 7)



Spec your own color



or Spec your own woodgrain or print

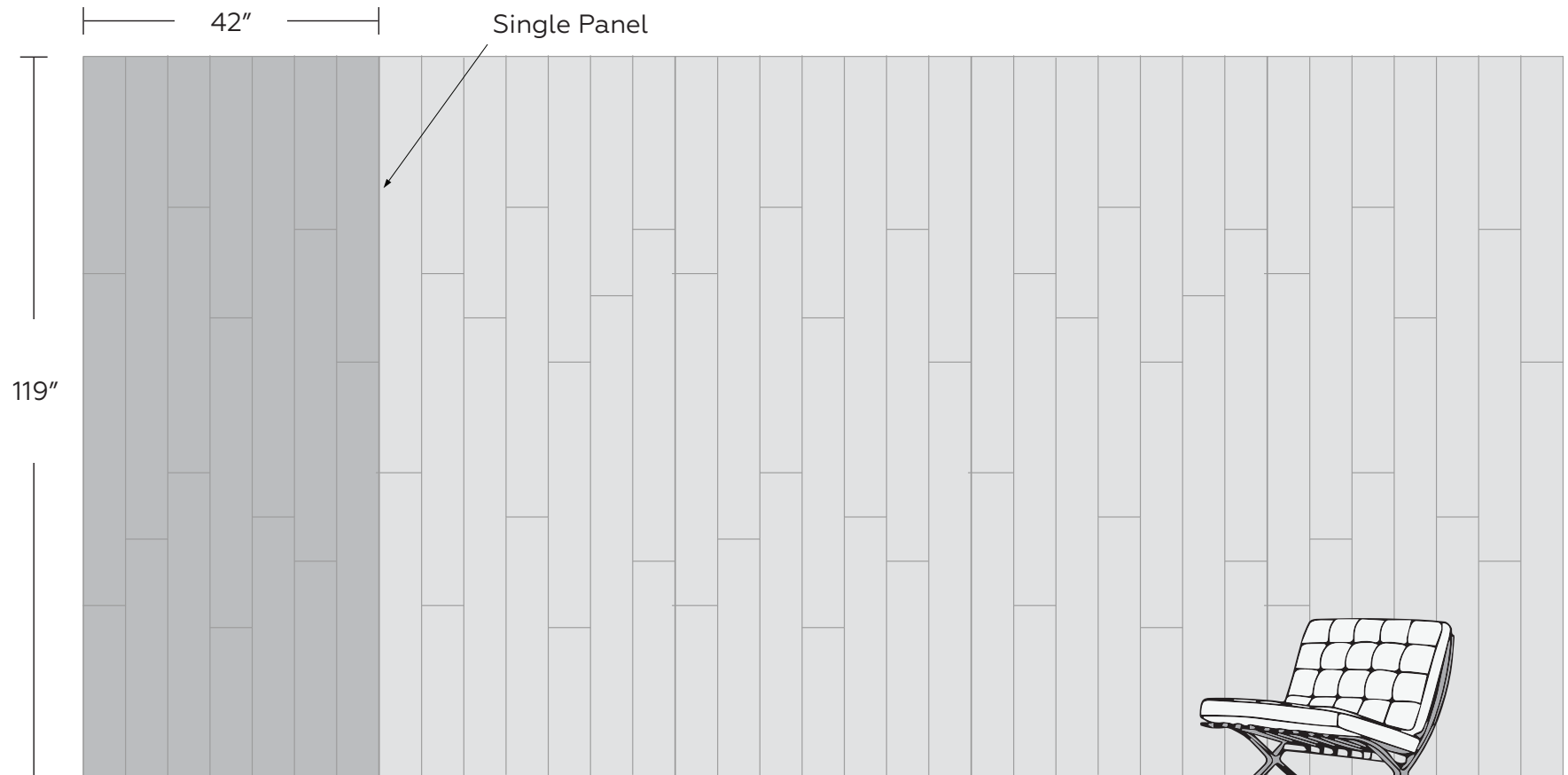
(See page 7 for more on **SHADES** by  **MPS**)



PRODUCT SPECIFICATIONS - VERTICAL WALL

STANDARD DIMENSIONS

| | |
|----------------|------------------|
| Single Panel | 42"W x 119"H |
| Single Plank | 6"W x Variable H |
| Felt Thickness | 3/8" |



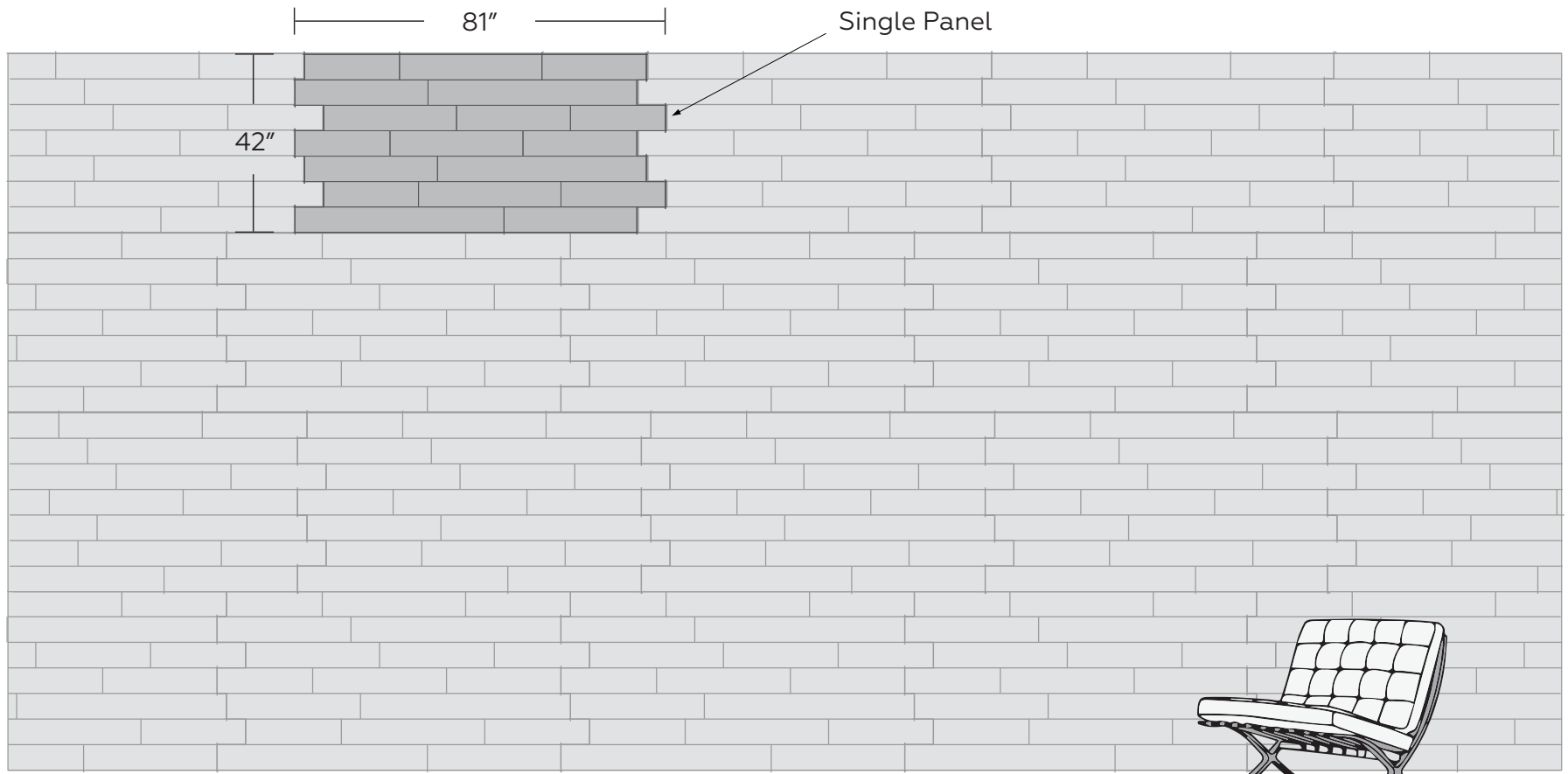
*Customize width using 42" standard panels



PRODUCT SPECIFICATIONS - HORIZONTAL WALL & CEILING

STANDARD DIMENSIONS

| | |
|----------------|------------------|
| Single Panel | 42"W x 81"H |
| Single Plank | 6"W x Variable H |
| Felt Thickness | $\frac{3}{8}$ " |



*Customize width using 42" standard panels



PRODUCT SPECIFICATIONS - WALL

CONNECTION

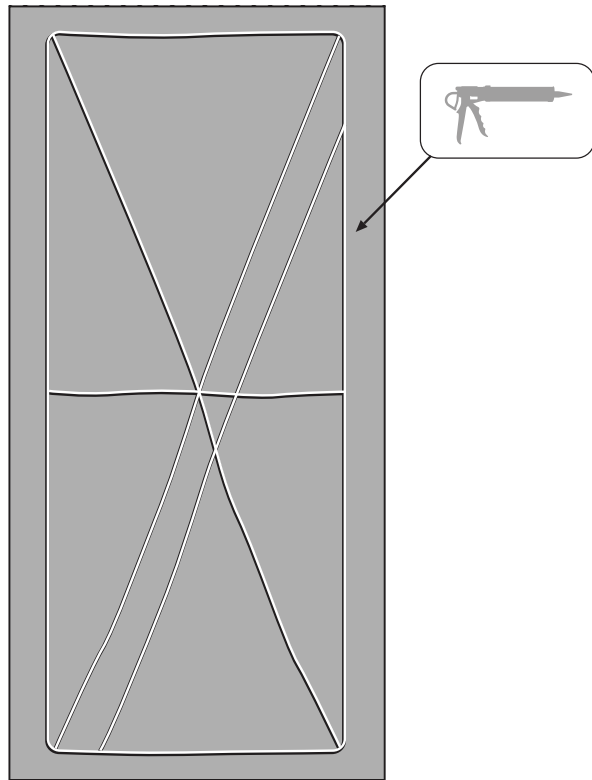
Standard Connection: Construction Adhesive
(provided by MPS)

ADDITIONAL OPTIONS

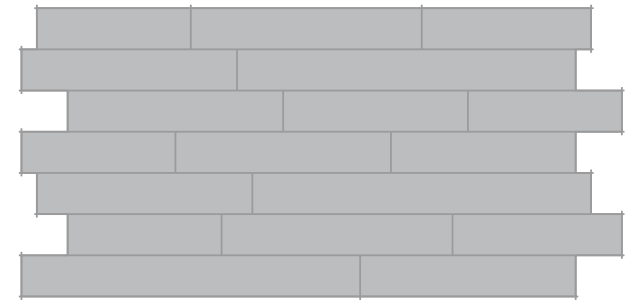
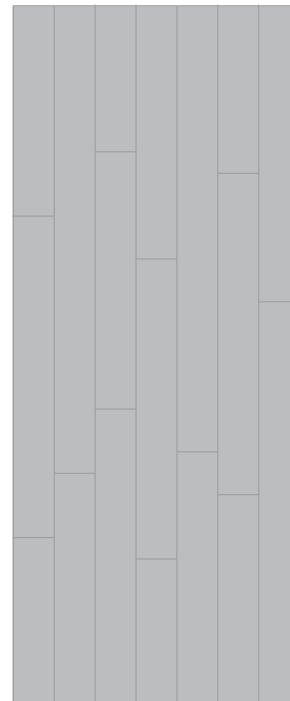
Configurations: Vertical or horizontal

Wood Print: Choose to print woodgrain before
V-cut (exposing base PET color) or print
after V-cut

CONSTRUCTION ADHESIVE



VERTICAL OR HORIZONTAL





PRODUCT SPECIFICATIONS - CEILING

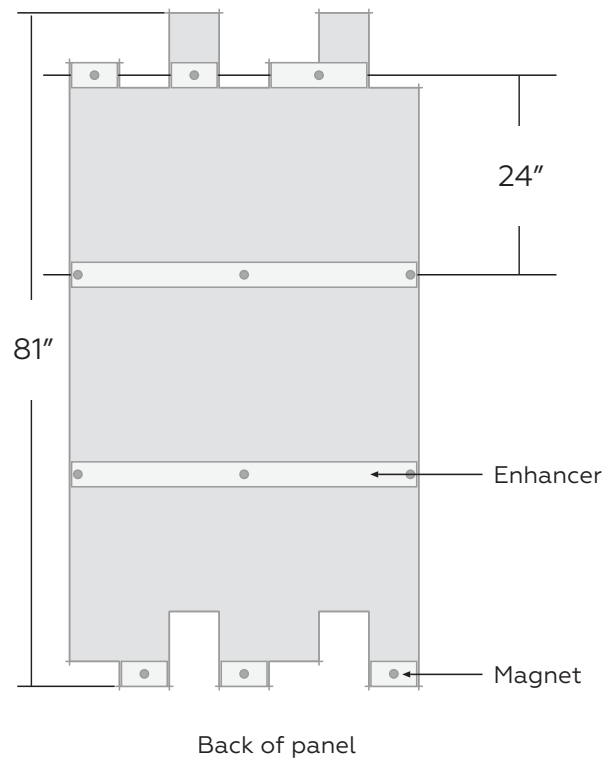
CONNECTION

Standard Connection: Magnets (provided by MPS)
on 2x2 15/16" T-grid

ADDITIONAL OPTIONS

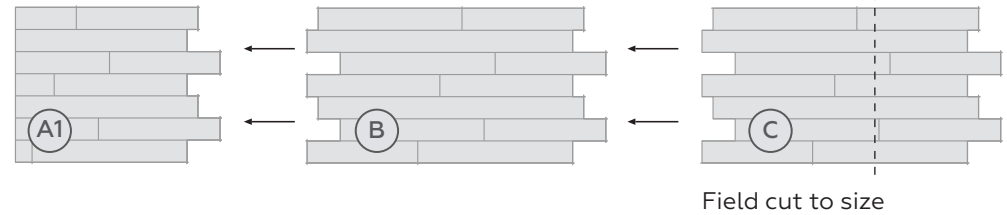
Wood Print: Choose to print woodgrain before
V-cut (exposing base PET color) or print
after V-cut

MAGNETIC CONNECTION

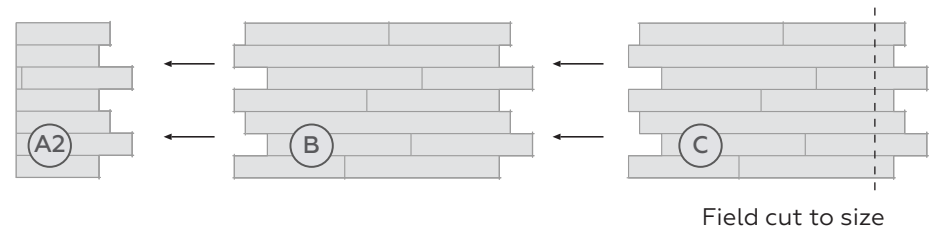


PANEL LAYOUT

FIRST STARTER



SECOND STARTER





PRODUCT SPECIFICATIONS - CEILING

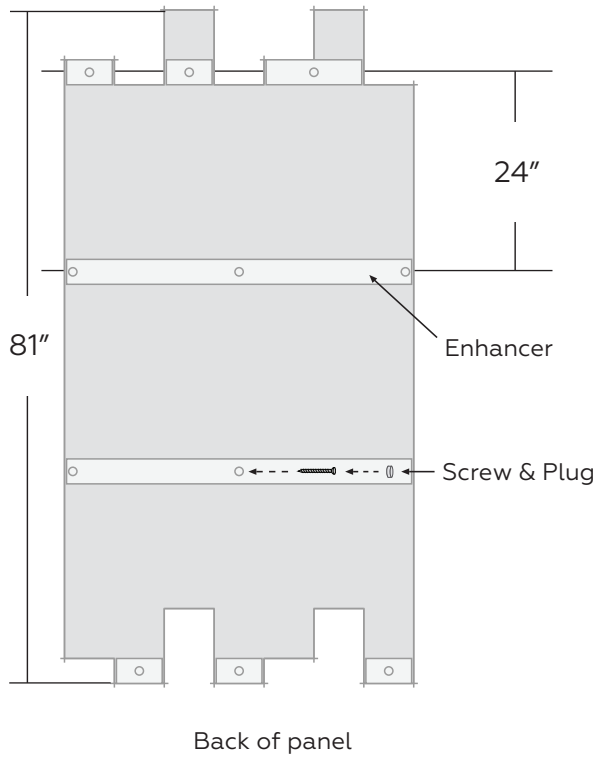
CONNECTION

Standard Connection: Screws and plugs
(provided by MPS) on 2x2 15/16" T-grid

ADDITIONAL OPTIONS

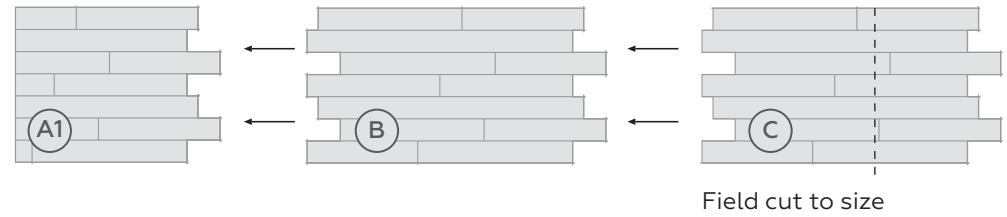
Wood Print: Choose to print woodgrain before
V-cut (exposing base PET color) or print
after V-cut

SCREWS & PLUGS CONNECTION

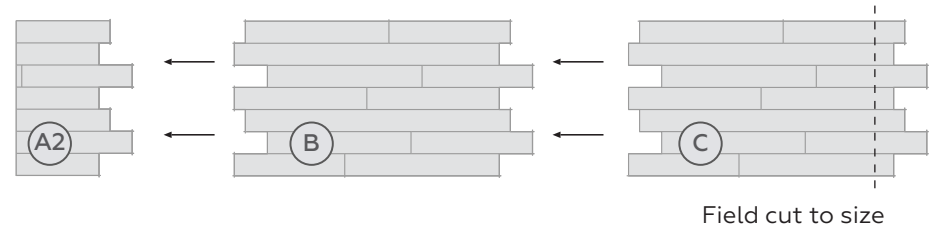


PANEL LAYOUT

FIRST STARTER



SECOND STARTER





TECHNICAL SPECIFICATIONS



Absorption

Standard: .32 NRC

(subject to mounting conditions)

Fire Rating

ASTM E84 Class A

Warranty

Two (2) Years

VOC

ASTM D5116 Compliant

Material

PET Felt: 100% polyester fiber

Maintenance

Vacuum clean to remove dust and debris

Sustainability

MPS 9mm Acoustic Panels
MPS LLC

Final Assembly: Trenton, Texas, USA
Life Expectancy: 50 Year(s)
End of Life Options: Salvageable/Reusable in its Entirety, Take Back Program (Trenton, TX), Recyclable (100%)

Ingredients:

MPS 9mm PET: Polyethylene Terephthalate

Living Building Challenge Criteria: Compliant

I-13 Red List:

| | |
|---|-----------------------------|
| <input checked="" type="checkbox"/> LBC Red List Free | % Disclosed: 100% at 100ppm |
| <input type="checkbox"/> LBC Red List Approved | VOC Content: Not Applicable |
| <input type="checkbox"/> Declared | |

I-10 Interior Performance: CDPH Standard Method v1.2-2017
I-14 Responsible Sourcing: Not Applicable

MPS-0001
EXP. 01 NOV 2025
Original Issue Date: 2022

MANUFACTURER RESPONSIBLE FOR LABEL ACCURACY
INTERNATIONAL LIVING FUTURE INSTITUTE™ living-future.org/declare





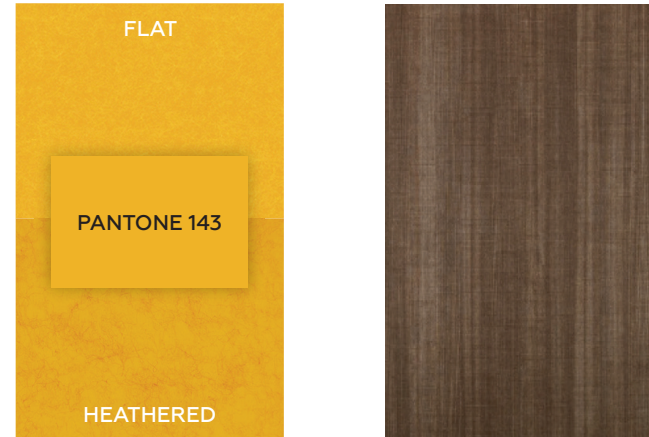
COLORS & WOODGRAINS

MPS offers a range of standard colors, woodgrains, and custom colors with SHADES.

WOODGRAINS



SHADES by MPS



Custom Colors

Custom Prints

Your design world revolves around color, so don't be limited by standard colors and outdated palettes. Shades offers Pantone options, full-color prints, and unique gradients. Flat or Heathered? Your choice.

*Some limitations apply. Consult your MPS acoustics expert to discuss your project.

STANDARD COLORS





MOUNTING OPTIONS

TOOLS REQUIRED



Cutting tool



Steel straightedge



Drill



Hole saw



Construction adhesive (wall)



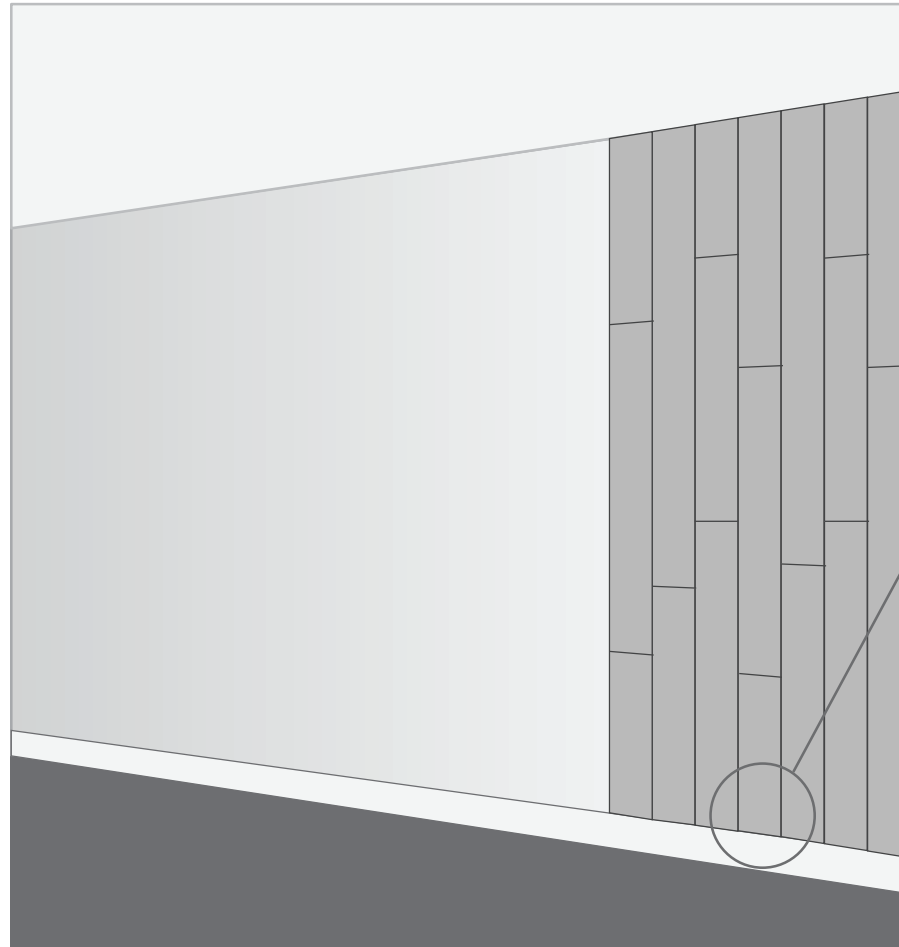
Magnets (ceiling)



Screws and plugs (ceiling)

DRY FIT (WALL CONFIGURATION)

Before applying adhesive, dry fit the first panel to the wall.



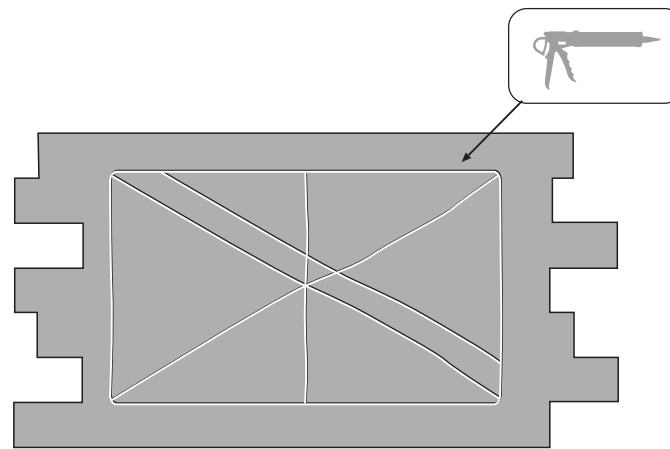
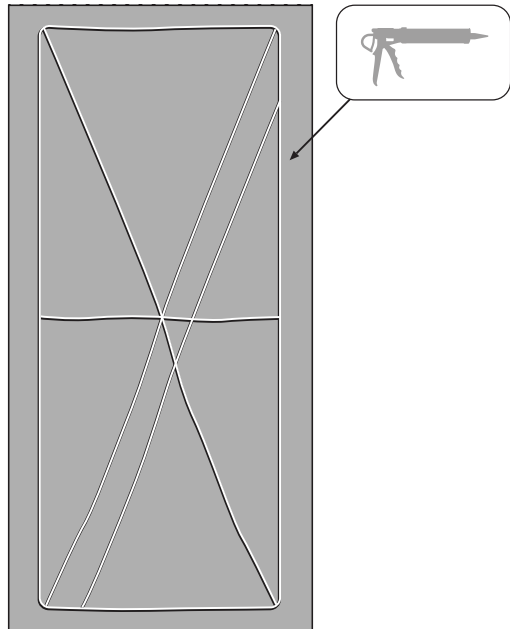
Note: to avoid irregularity, we recommend applying to the top of a baseboard.

*Ensure the surface is level or product will appear uneven

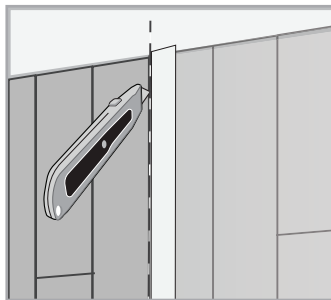


MOUNTING OPTIONS - WALL

APPLY CONSTRUCTION ADHESIVE

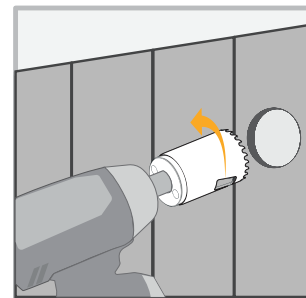


TRIM AS REQUIRED



Trim panels along the end to fit using a straight edge and cutting tool.

TRIMMING HOLES

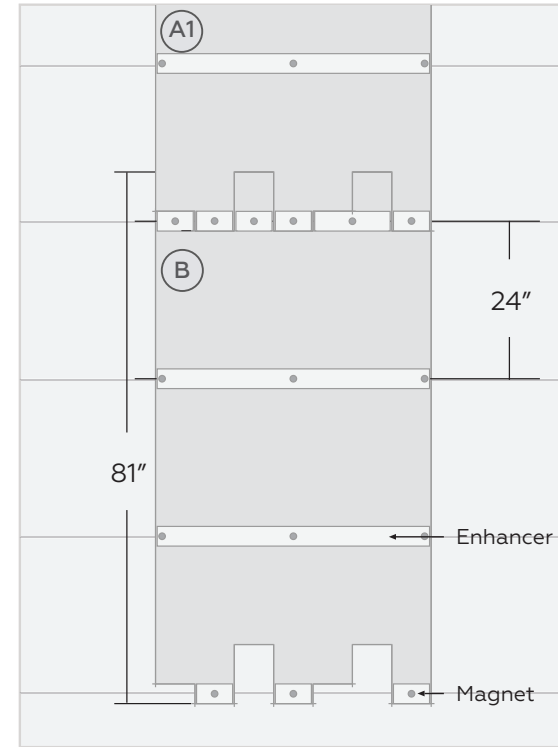
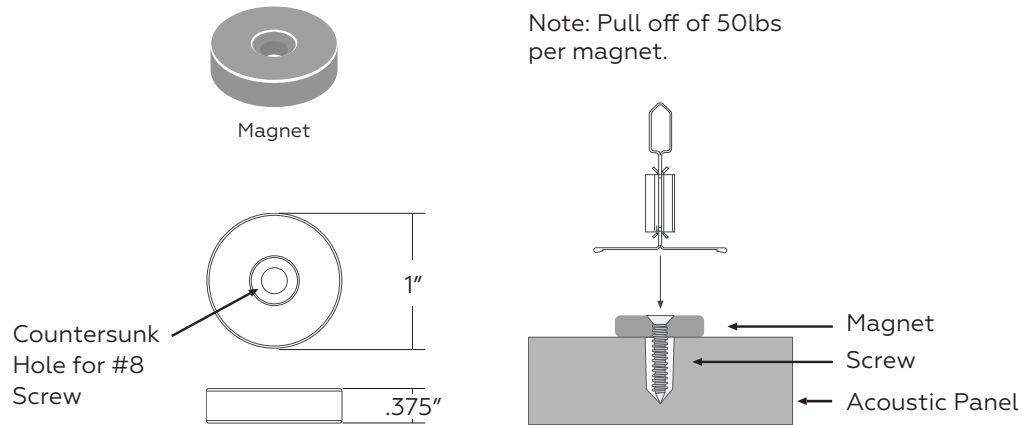


When cutting a circular hole use a hole saw, and run it backwards to minimize pulling.

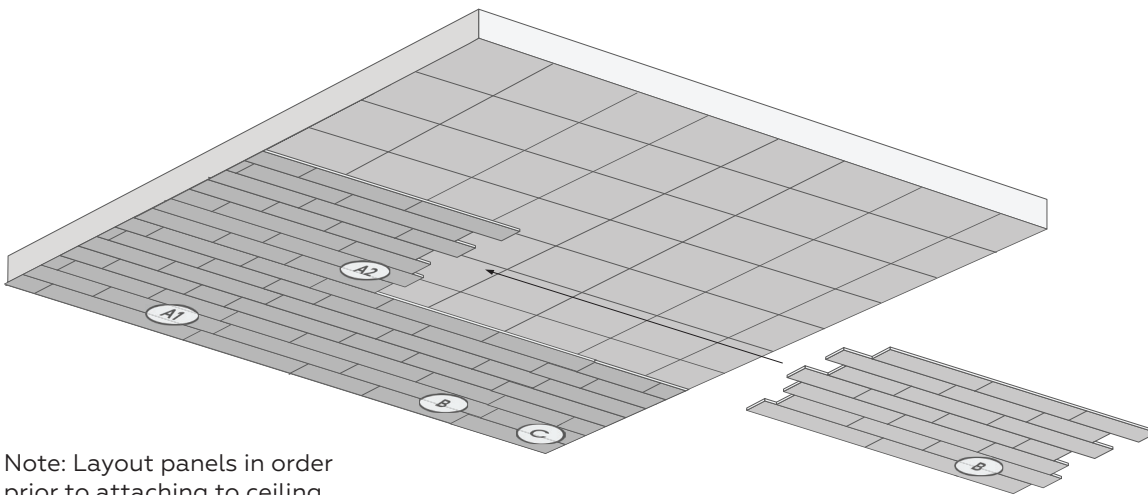


MOUNTING OPTIONS - CEILING

ATTACH MAGNETS AND CONNECT PANELS TO CEILING

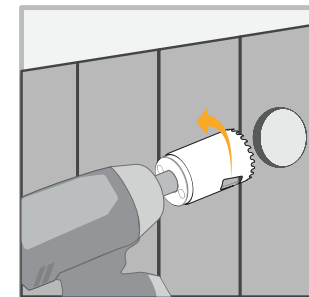


Magnets are attached to the horizontal grid-line. Vertical grid-line is for support of the ceiling grid only.



Note: Layout panels in order prior to attaching to ceiling.

TRIMMING HOLES



When cutting a circular hole use a hole saw, and run it backwards to minimize pulling.



MOUNTING OPTIONS - CEILING

SCREWS AND PLUGS

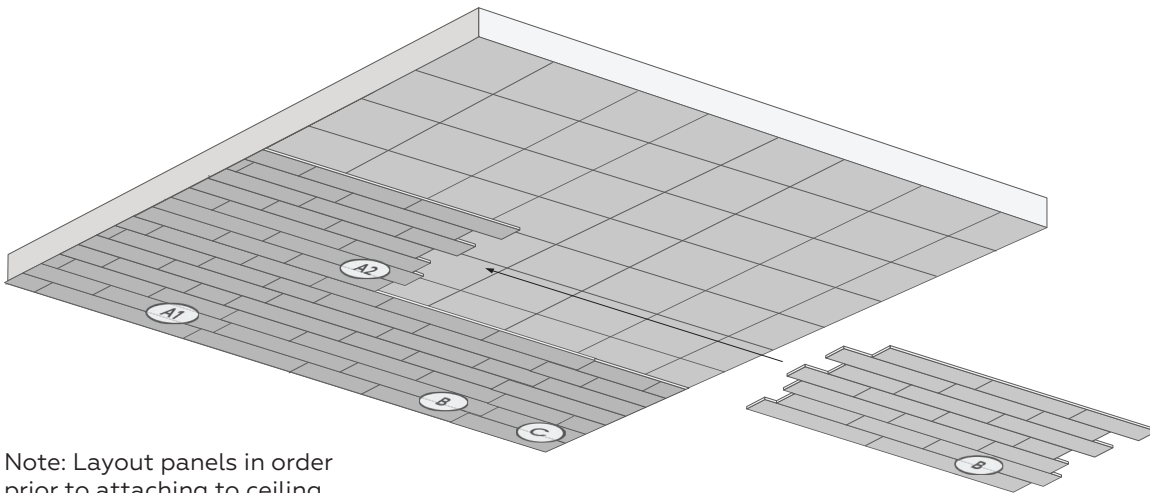
Screw panels to ceiling and insert plugs.



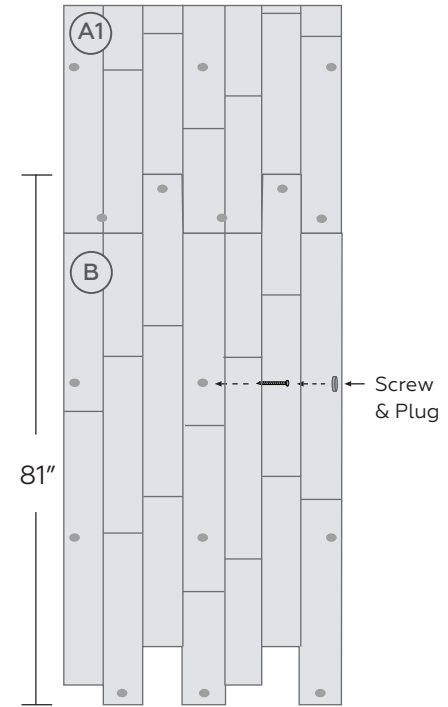
Screw



Plug

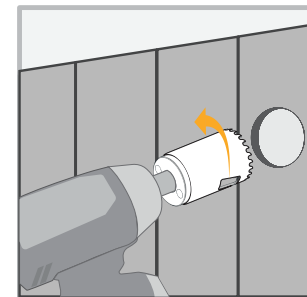


Note: Layout panels in order prior to attaching to ceiling.



Screw through the front of the panels to mount them to the ceiling. Follow the screws with plugs to conceal the hardware.

TRIMMING HOLES



When cutting a circular hole use a hole saw, and run it backwards to minimize pulling.