



DECO

felt wall





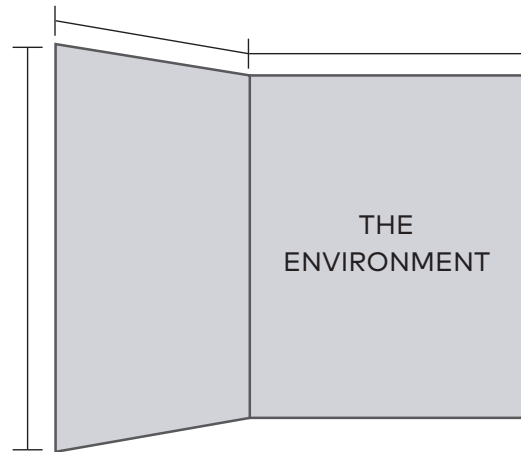
HOW TO SPECIFY

Re-think, re-design, reveal what a wall can be with Deco. The precise geometric pattern adds intrigue to any space, while also exposing a carefully curated secondary color. Reduce unwanted noise and echo with Deco acoustic felt walls.

Available in over 30 colorways.

01

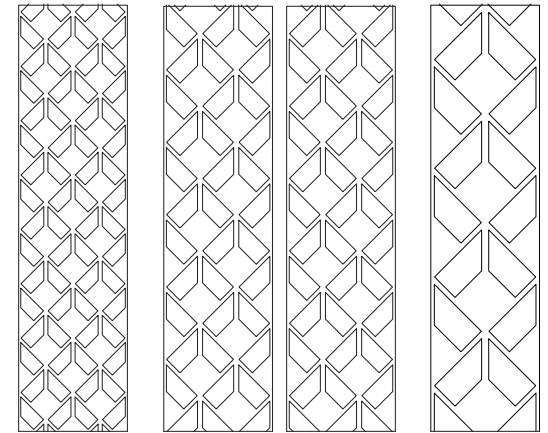
SPECS



Tell us about your space, the design, and dimensions.

02

PATTERN SIZES



What size does your design call for?
Deco is offered in four pattern sizes.

03

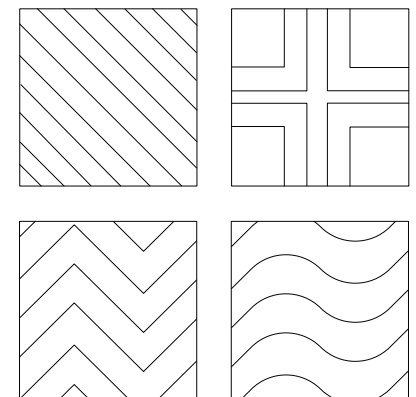
COLORWAYS



Over 30 standard colorways.
What's your color? (See page 7)

04

MAKE IT YOUR OWN!



Customize your pattern



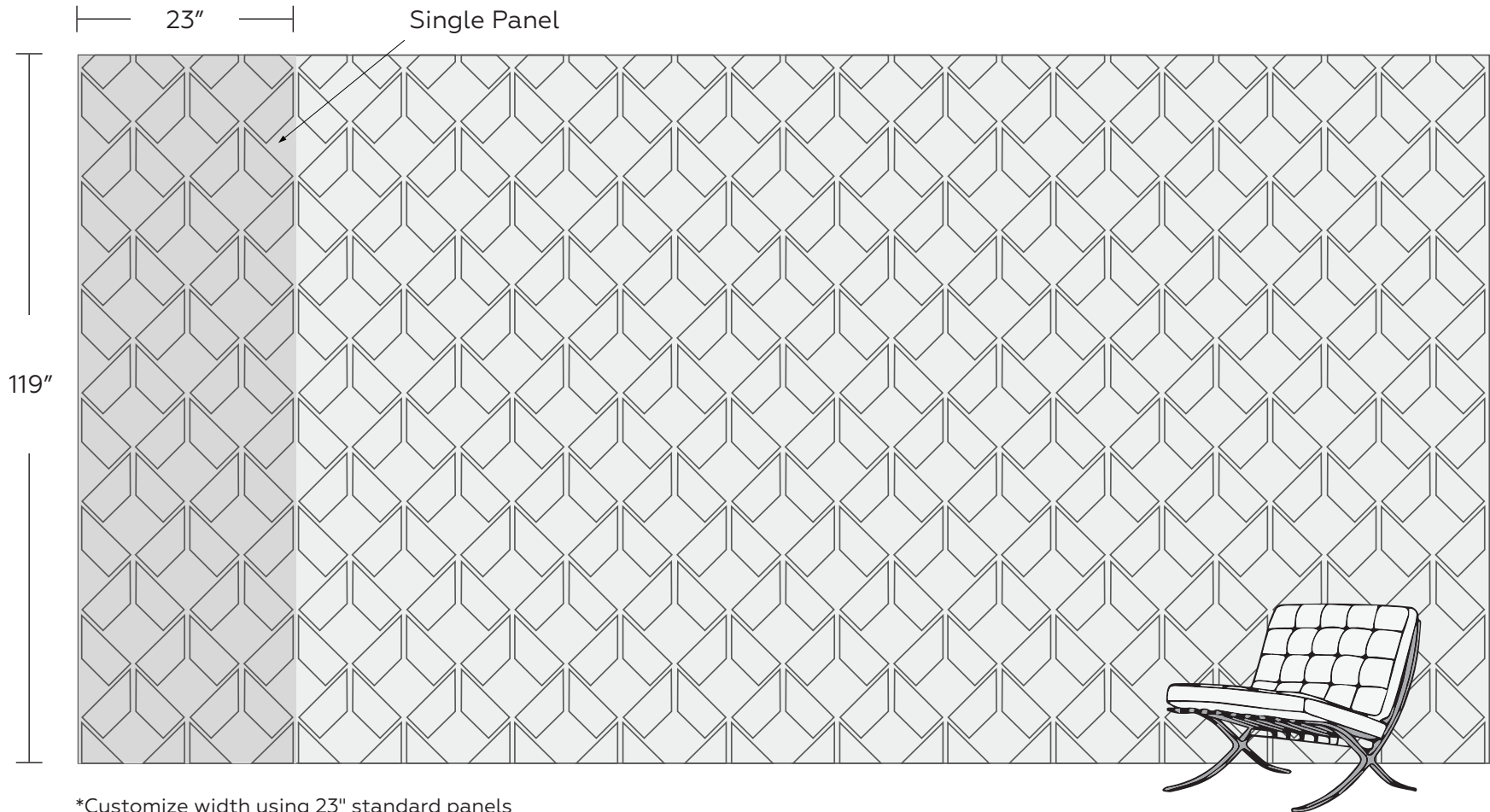
PRODUCT SPECIFICATIONS

STANDARD DIMENSIONS

Single Panel 23"W x 119"H

Felt Thickness 3/8"

- Choose from over 30 colorways
- 100% polyester fiber acoustic panel
- Measurably improves acoustic privacy
- Sound absorption and blocking
- Ambient noise reduction within the room
- Reduced reverberation and echo
- Easily disinfected and cleaned
- Easily installed



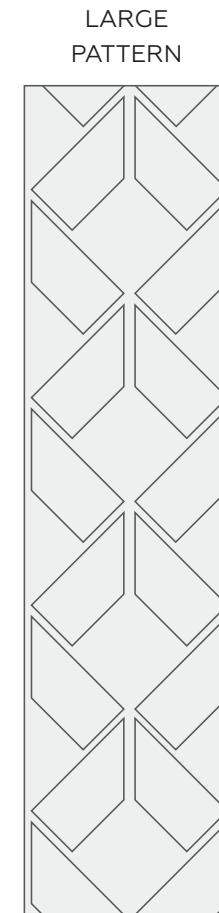
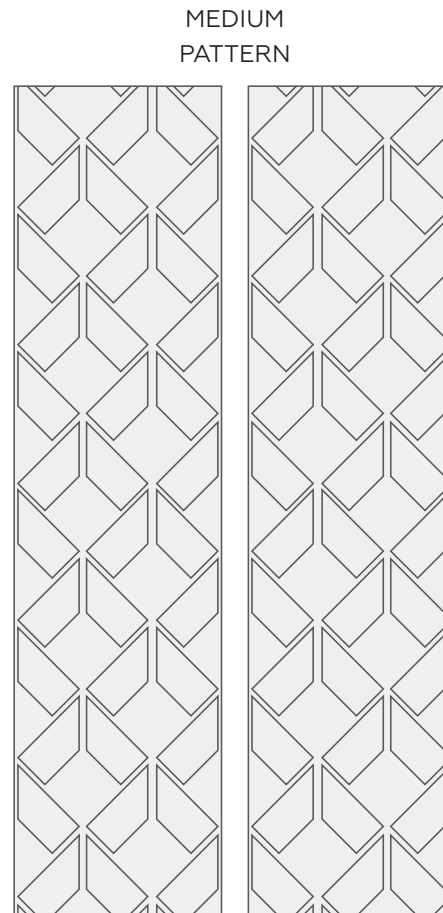
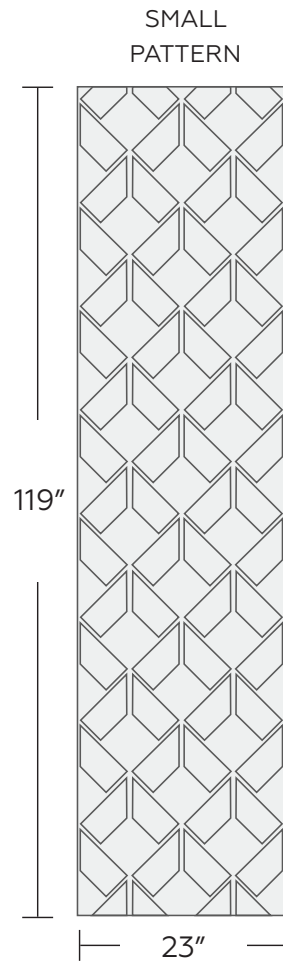
*Customize width using 23" standard panels



PRODUCT SPECIFICATIONS

PATTERN SIZES

Deco comes in three standard pattern sizes.





PRODUCT SPECIFICATIONS

CONNECTION

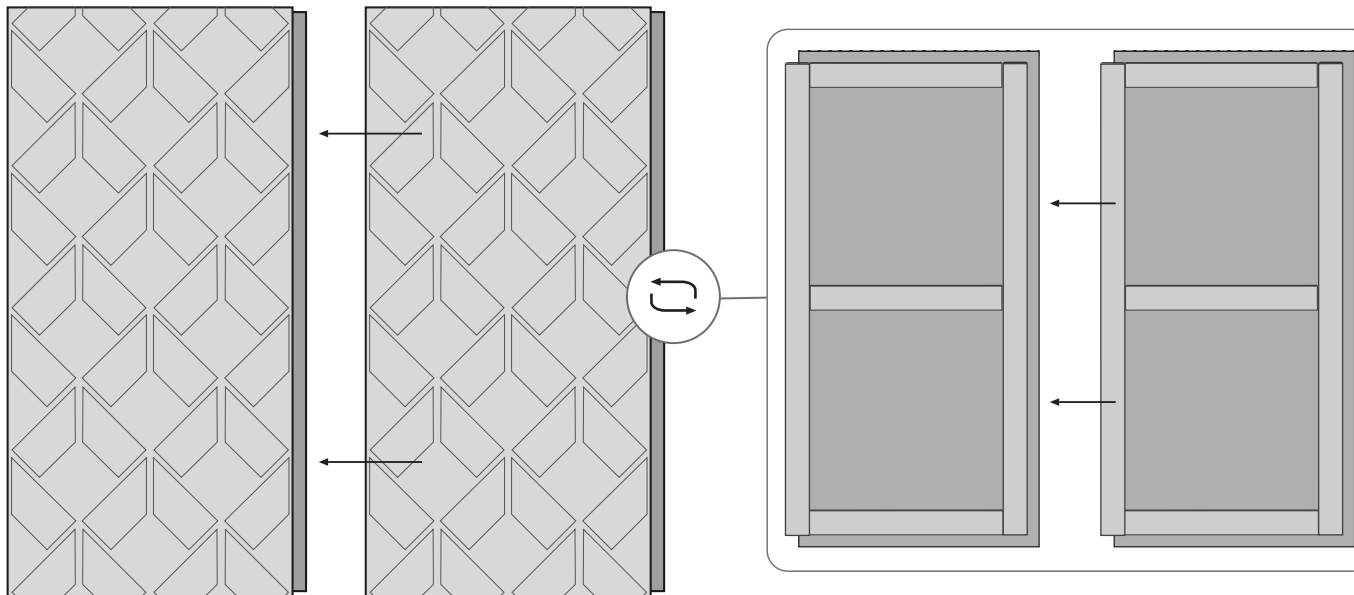
Standard Connection: Construction Adhesive
(provided by MPS)

Alternate Connection: Z-Clip
(Acoustic Enhancers Required)

ADDITIONAL OPTIONS

Acoustic Enhancers: Increase NRC to .50 by
adding acoustic enhancers (additional lead
time required)

"TONGUE & GROOVE" ACOUSTIC ENHANCER





TECHNICAL SPECIFICATIONS



Absorption

Standard: .32 NRC

W/Acoustic Enhancers: .50 NRC
(subject to mounting conditions)

Fire Rating

ASTM E84 Class A

Warranty

Two (2) Years

VOC

ASTM D5116 Compliant

Material

PET Felt: 100% polyester fiber

Maintenance

Vacuum clean to remove dust
and debris

Sustainability

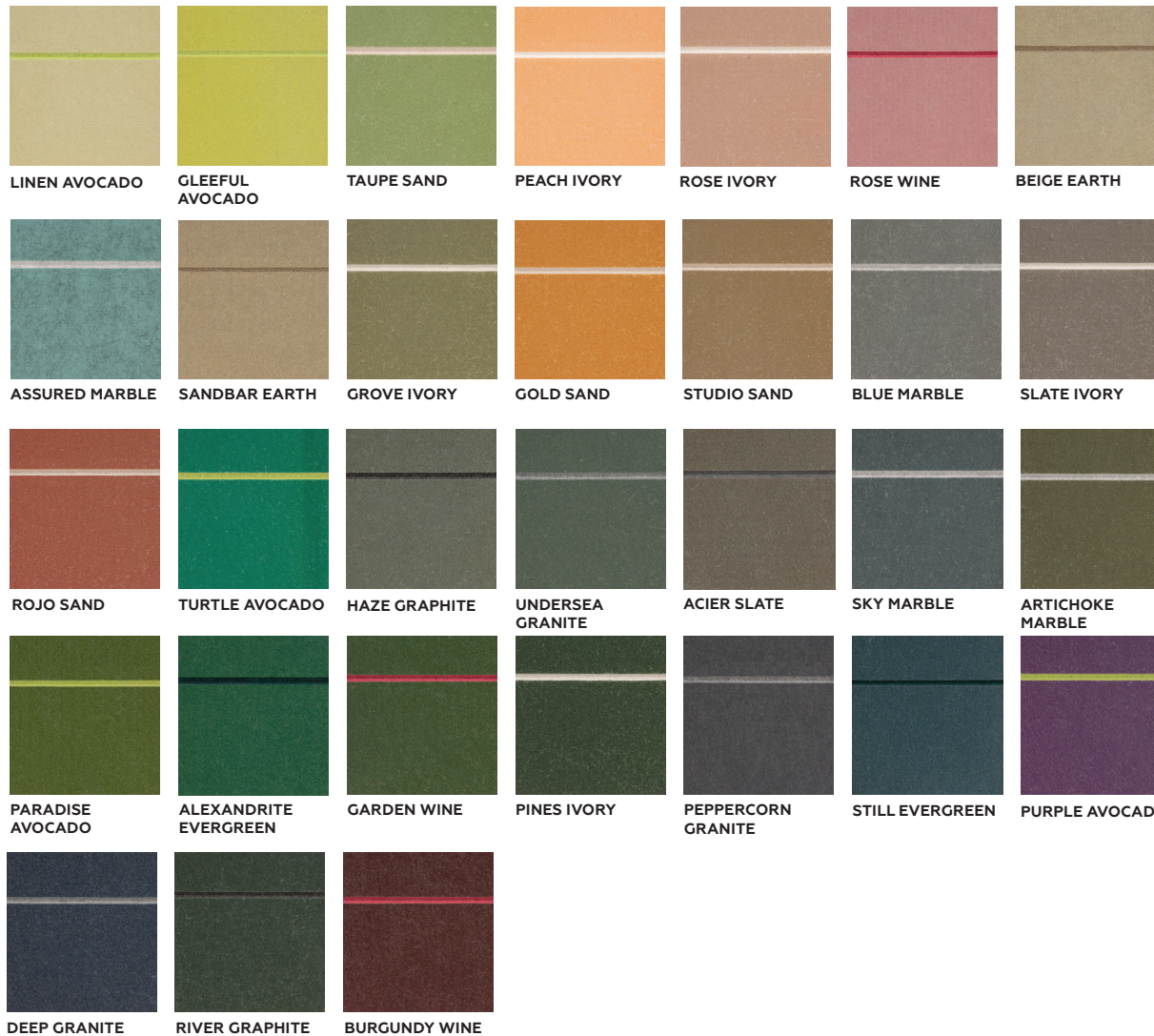




COLORWAYS

MPS offers a range of over 30 curated colorways.

CURATED COLORWAYS



SHADES by MPS™

Your design world revolves around color, so don't be limited by standard colors and outdated palettes. SHADES offers Pantone options, full-color prints, and unique gradients. Flat or Heathered? Your choice.

*Some limitations apply. Consult your MPS acoustics expert to discuss your project.



PRODUCT INSTALLATION

TOOLS REQUIRED



Cutting tool



Steel straightedge



Drill



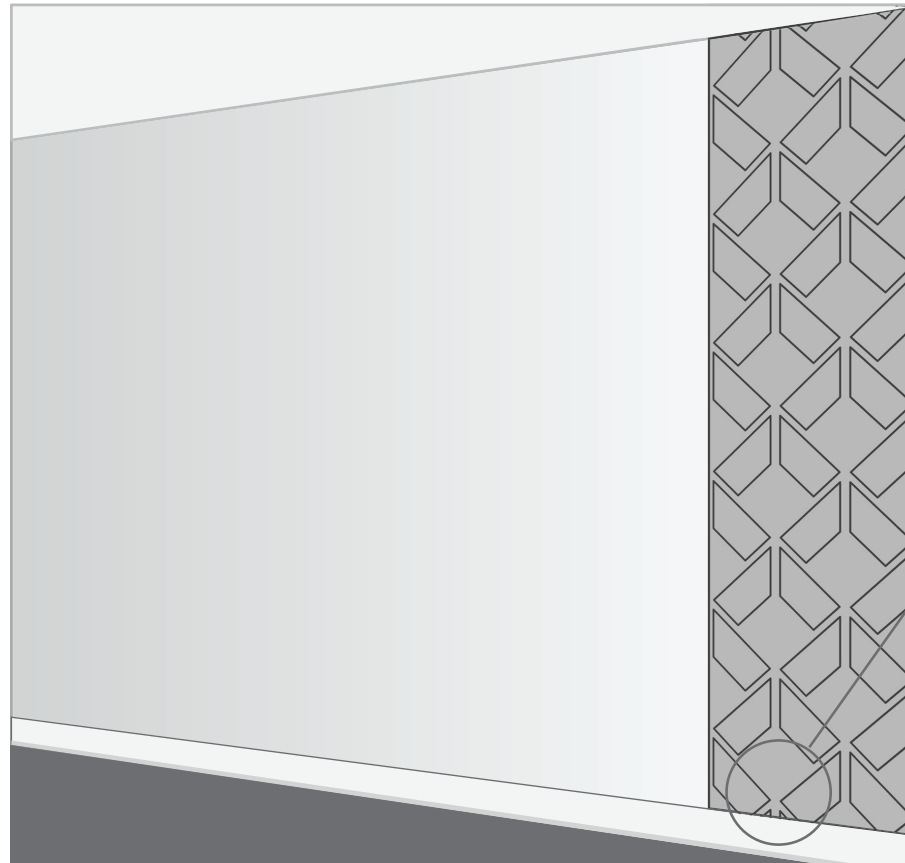
Hole saw



Construction adhesive

DRY FIT

Before applying adhesive, dry fit the first panel to the wall.

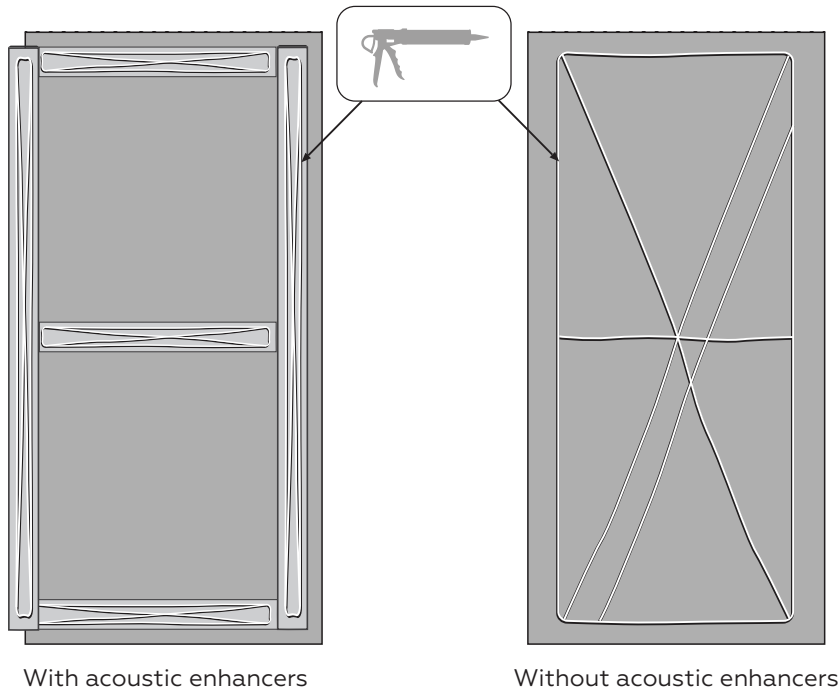


Note: to avoid irregularity, we recommend applying to the top of a baseboard.



PRODUCT INSTALLATION

APPLY CONSTRUCTION ADHESIVE (RECOMMENDED)

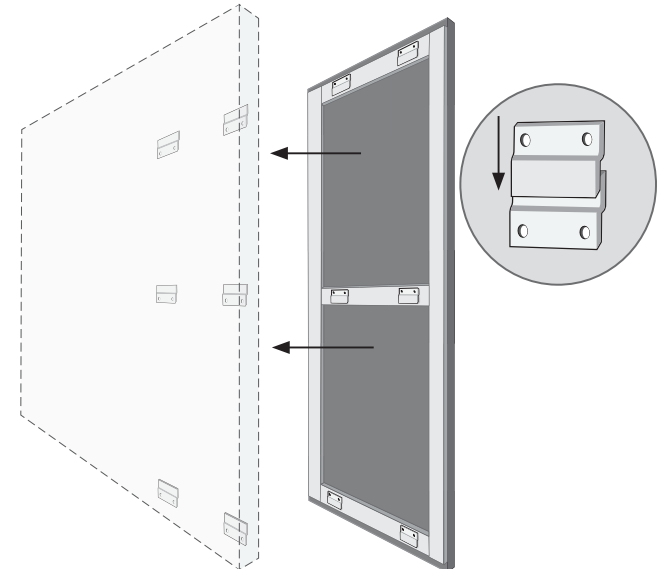


With acoustic enhancers

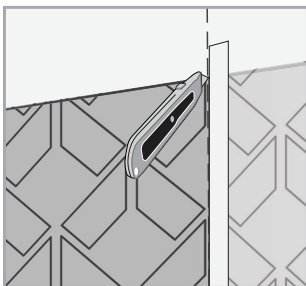
Without acoustic enhancers

HOOK Z-CLIPS (ALTERNATIVE)

Determine the desired position of z-clips and screw them into the back of the panel.

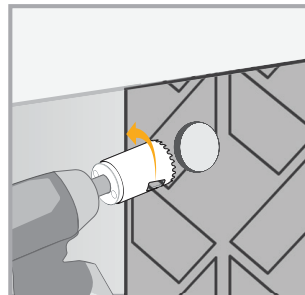


TRIM AS REQUIRED



Trim panels along the end to fit using a straight edge and cutting tool.

TRIMMING HOLES



When cutting a circular hole use a hole saw, and run it backwards to minimize pulling.