



DECO

felt wall





# INSTALLATION GUIDELINES

## TOOLS REQUIRED



Cutting tool



Steel straightedge



Drill



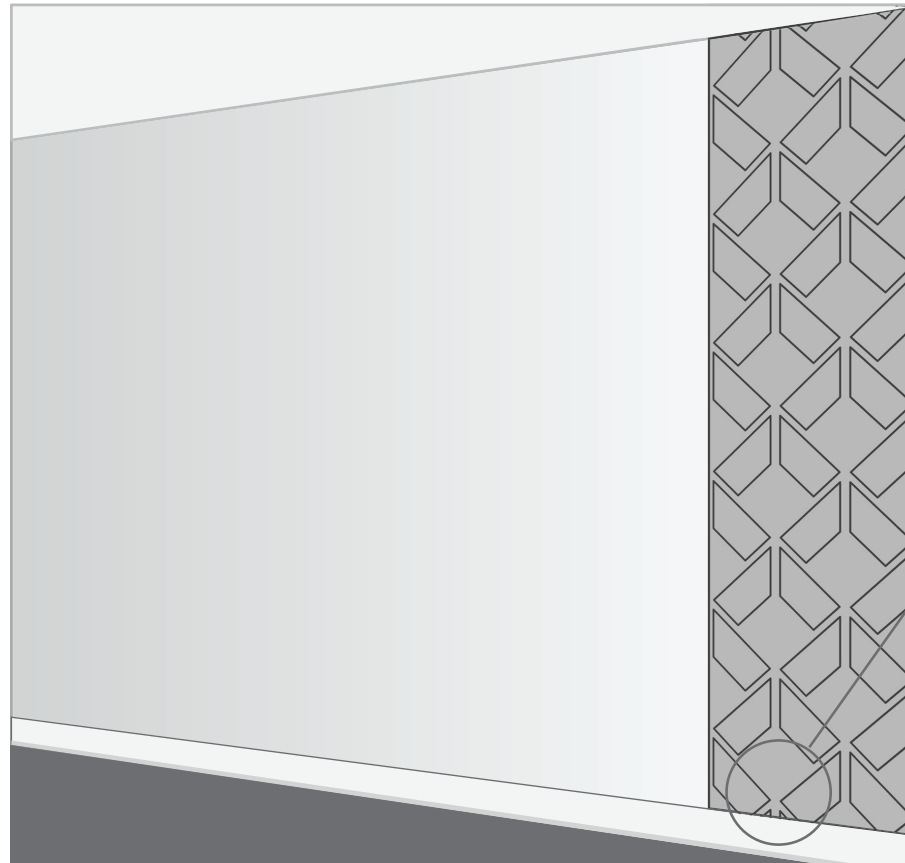
Hole saw



Construction adhesive

## DRY FIT

Before applying adhesive, dry fit the first panel to the wall.



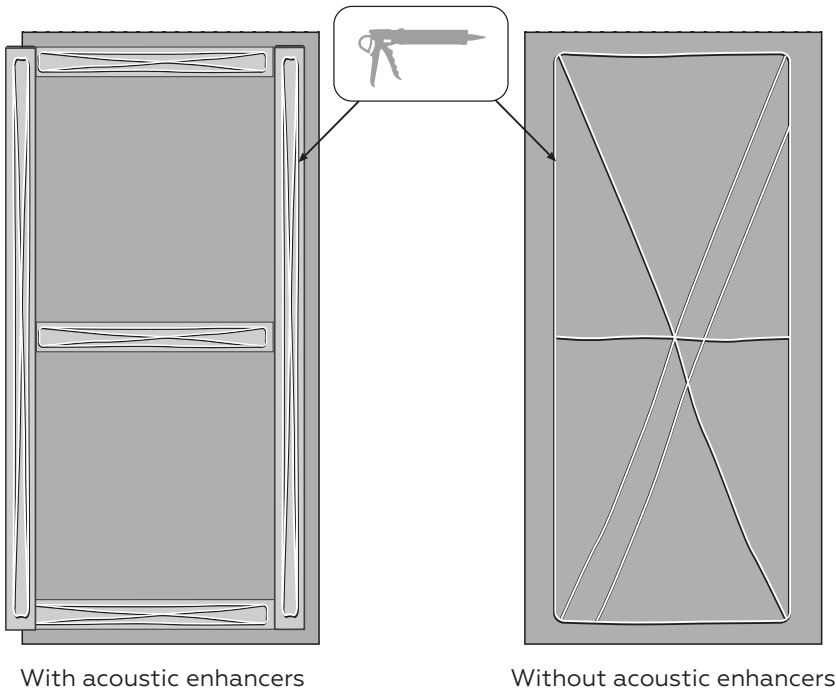
Note: to avoid irregularity, we recommend applying to the top of a baseboard.





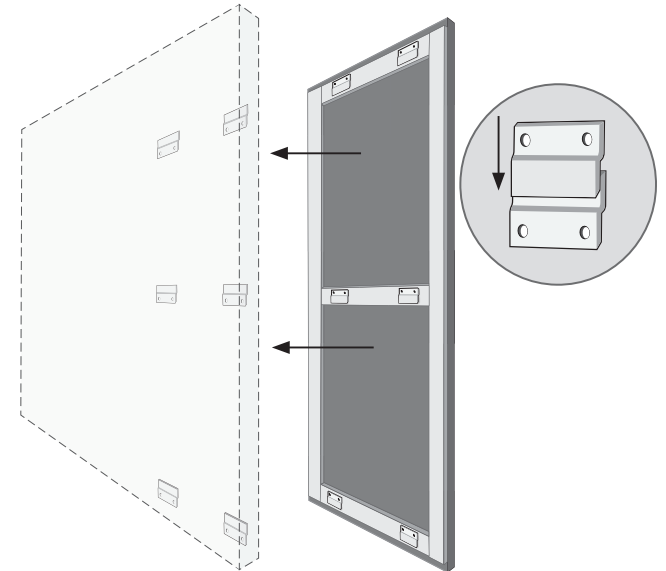
# INSTALLATION GUIDELINES

## APPLY CONSTRUCTION ADHESIVE (RECOMMENDED)

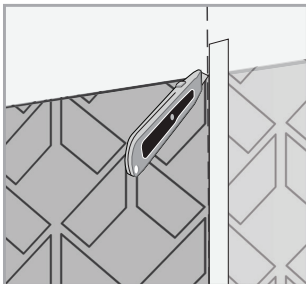


## HOOK Z-CLIPS (ALTERNATIVE)

Determine the desired position of z-clips and screw them into the back of the panel.

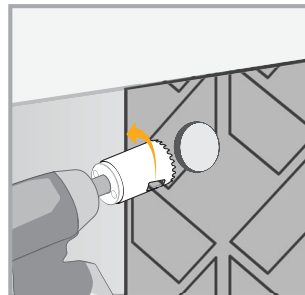


## TRIM AS REQUIRED



Trim panels along the end to fit using a straight edge and cutting tool.

## TRIMMING HOLES



When cutting a circular hole use a hole saw, and run it backwards to minimize pulling.