



INSTALLATION GUIDELINES

FIN WALL-MOUNTED PANELS

Fin Acoustical Wall Tiles

Fin Acoustic Wall Panels consist of two components: a flat acoustic felt backer panel, which should be mounted to the wall using included drywall screws, and ridges, which will fold and mount via tabs to slots in the backer panel. The ridges will conceal the drywall screws.

Installers should rely upon their own professional experience and understanding of their unique requirements to ensure a successful install.

Tools Needed

Level



Box Cutter

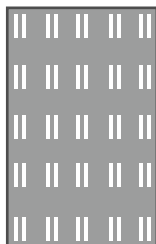


Drill



Items Included

Backer panel



Slats



Drywall screws

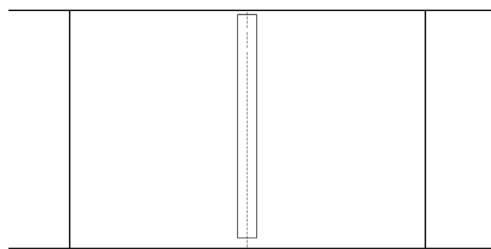


Plugs



INSTALLATION

1. Fin will arrive disassembled. Each Fin wall panel will consist of a flat wall panel and an appropriate number of flattened fin panels.
2. Locate hardware, including drywall screws.
3. Using a level, mount the Fin panel(s) into the appropriate spot using the drywall screws.



4. Insert the felt plugs until they are flush with the Fin panel to conceal the drywall screws.

