

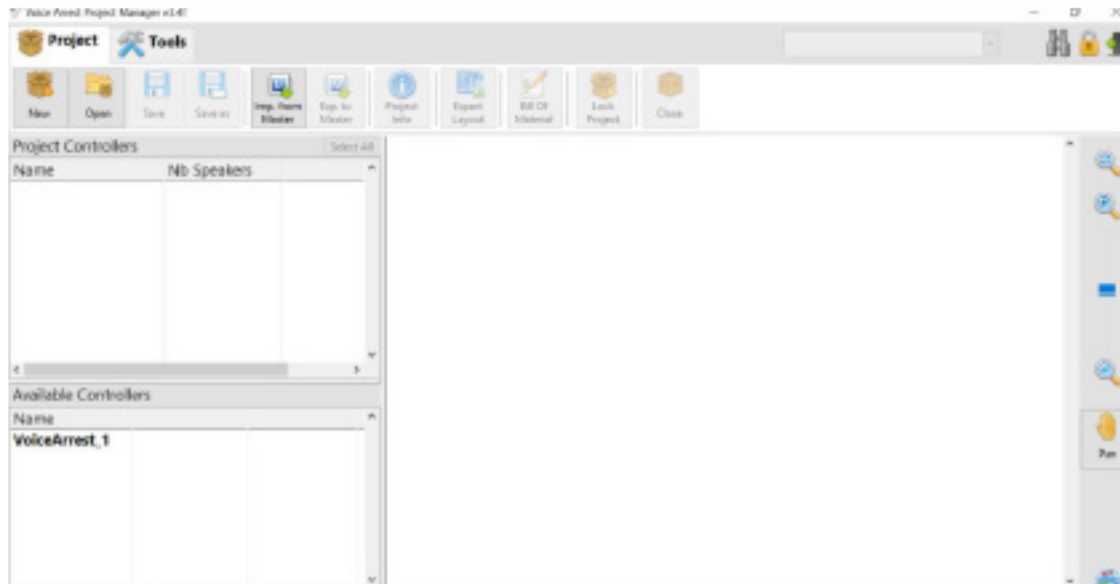
MASKING VOLUME ADJUSTMENTS



VoiceArrest Sound Masking System

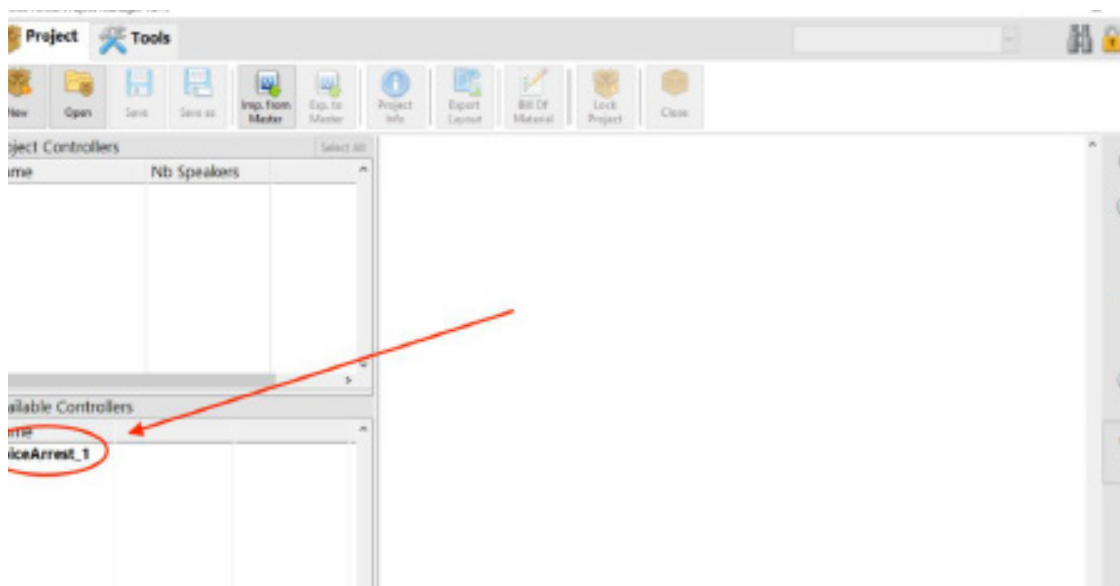
After installing the VoiceArrest software, open the software. You will have access to the "Project" and "Tools" tabs. (Figure 1-1)

Figure 1-1



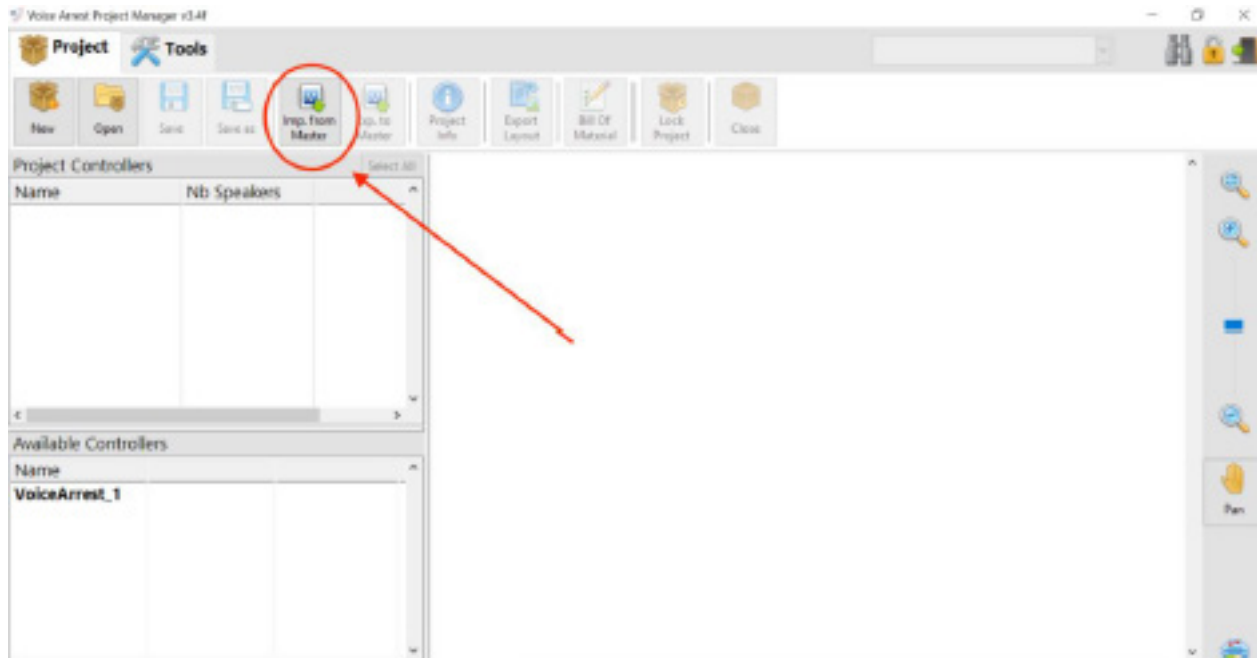
- There are two ways to connect to your controller. The first is to connect directly to the controller via the USB cord that will be plugged into your controller and was provided by MPS. The second is to connect the controller to your local network. To connect your controller to the network, please review our PDF or Video called "Networking the Controller".
- After you have connected to the controller, your controller will show under "Available Controllers" in the software. (Figure 1-2)

Figure 1-2



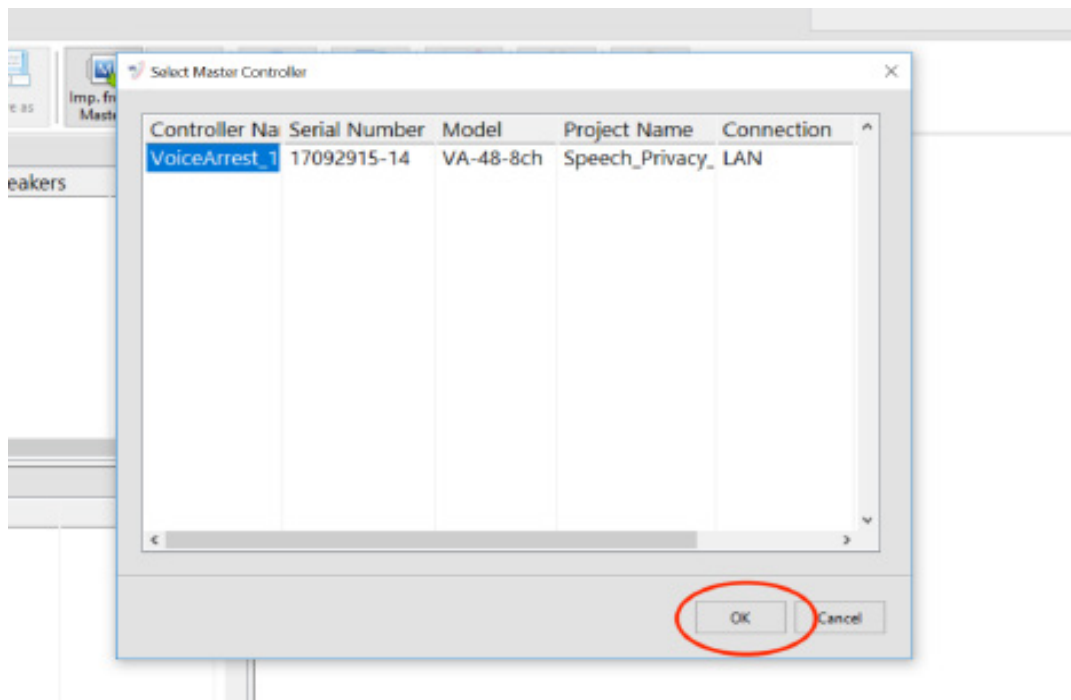
- Select "Import from Master". (Figure 1-3)

Figure 1-3



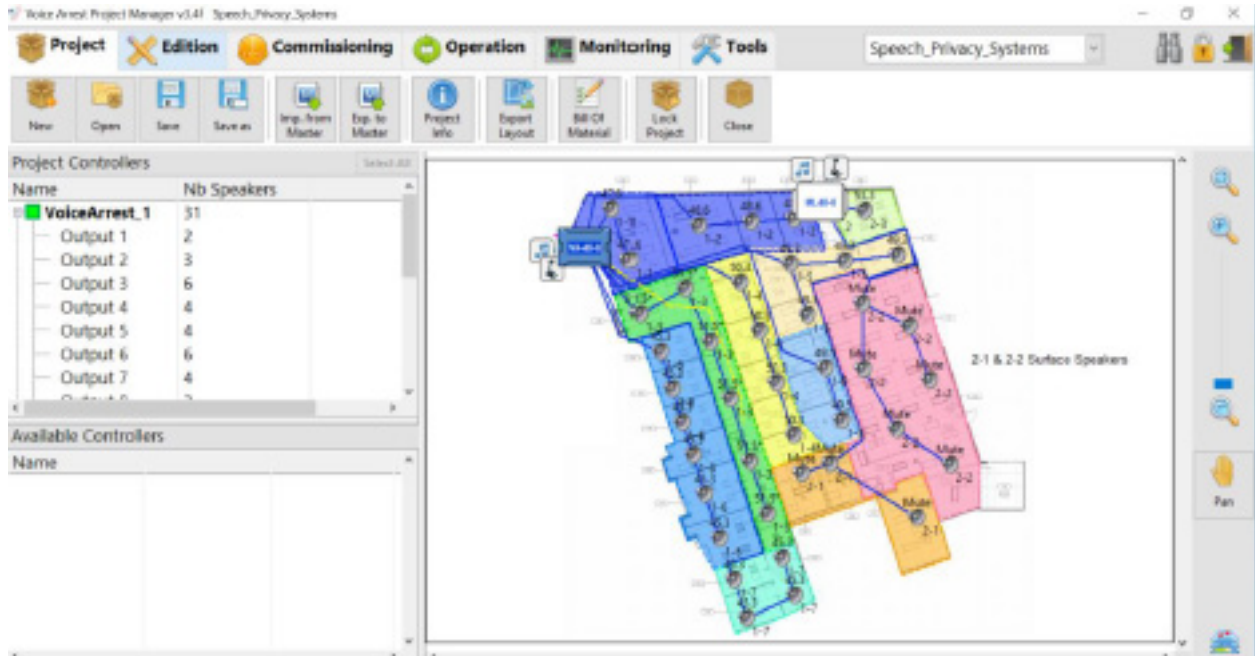
- Select "OK". (Figure 1-4)

Figure 1-3



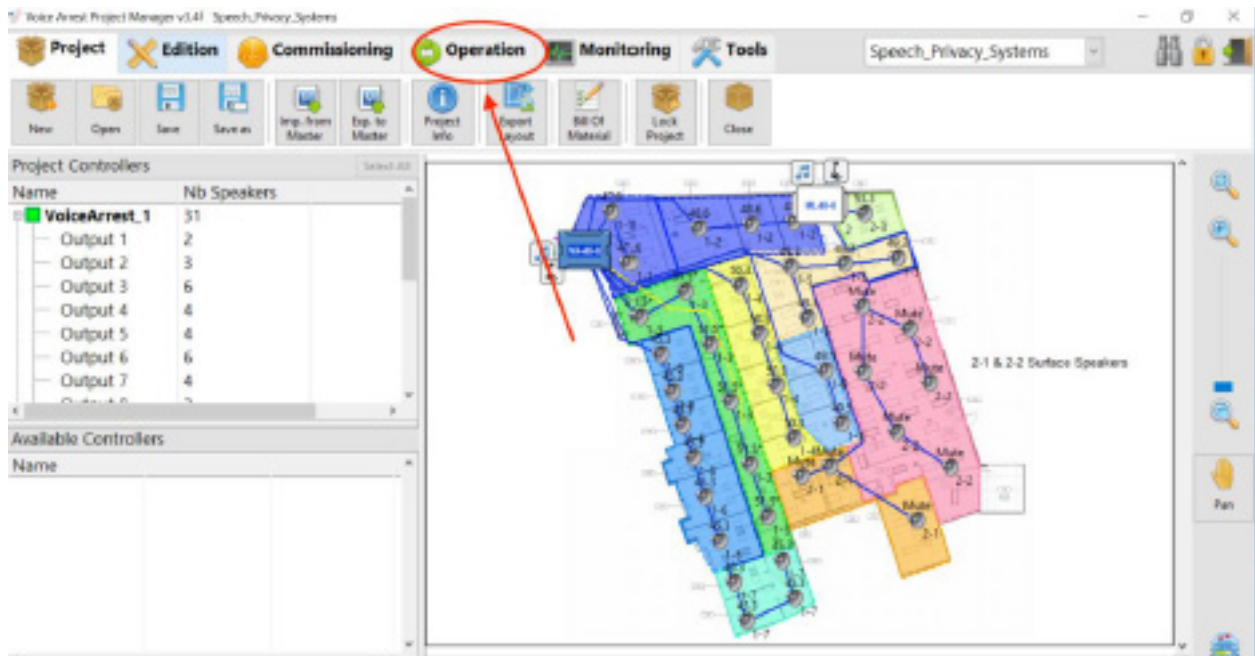
- The software will import the custom file that was created specifically for your space from the sound masking Master Controller. (Figure 1-5)

Figure 1-5



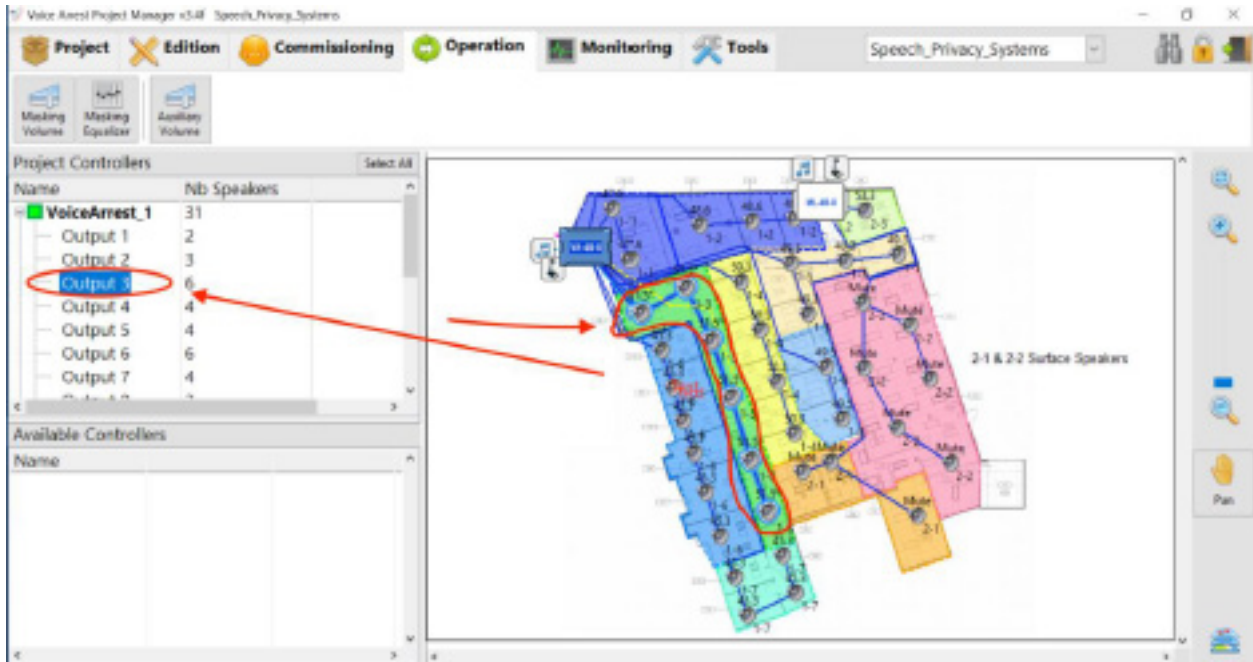
- To make masking volume adjustments, click on the "Operation" tab. (Figure 1-6)

Figure 1-6



- Click on an individual speaker on the layout OR an output under "Project Controller". This will highlight the entire output on the layout so that you know exactly where in your space you are about to adjust.(Figure 1-7)

Figure 1-7



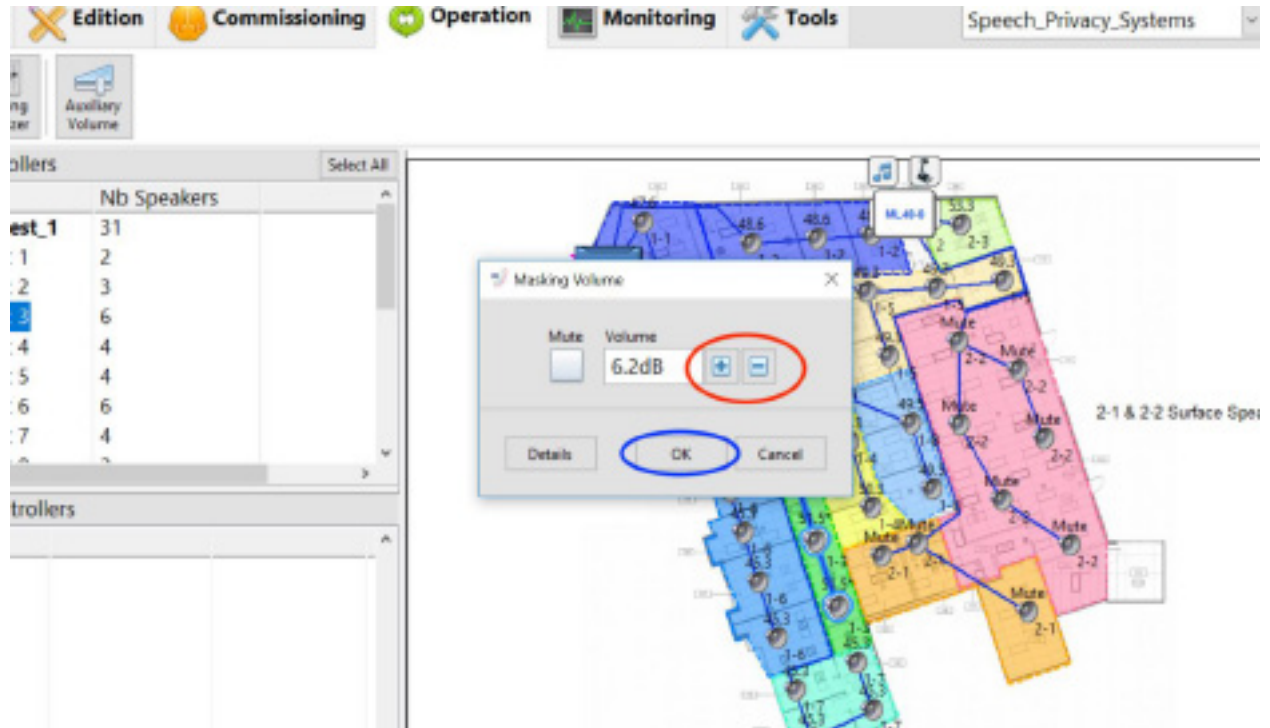
- After selecting an output, select "Masking Volume". (Figure 1-8)

Figure 1-8



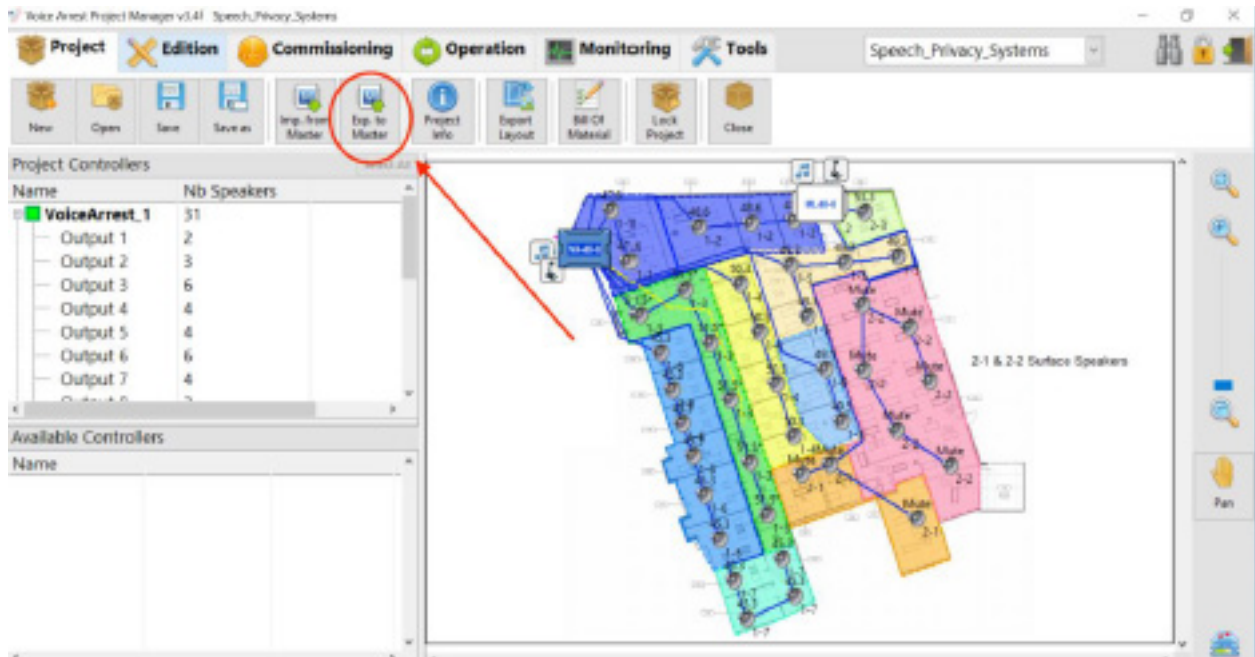
- The following screen will appear. Use the "+" and "-" buttons to adjust the volume. Make initial adjustments in values of 2.0 dB. This will allow you to get the volume close to where you would like it quicker and then once you have the volume close, you can then make smaller adjustments to fine tune the system. Once you have the volume where you would like, select "OK". (Figure 1-9)

Figure 1-9



- Repeat the previous step for each output. Once you have adjusted all outputs, return to the "Project" tab and select "Export to Master". This will save all the changes you just made to the controller.

Figure 1-10



- Before exiting out of the software, select the "Close" button. You will be asked to save a version of the file on your computer. Always do so. This will give you a backup file to have in case of emergency.

Figure 1-11

