



WANDER

felt wall and ceiling





# INSTALLATION GUIDELINES

Wander Acoustic Wall Panels are easy to install. Each panel should be leveled and mounted to the wall using included construction adhesive.

Installers should rely upon their own professional experience and understanding of their unique requirements to ensure a successful install.

## TOOLS REQUIRED



Cutting tool



Steel straightedge



Drill



Hole saw



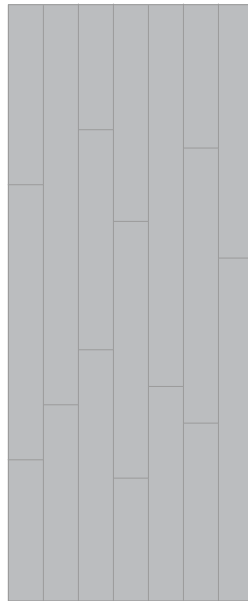
Construction adhesive (wall)



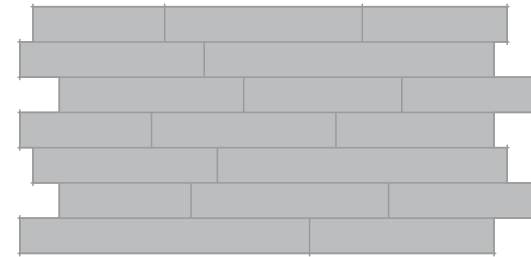
Magnets (ceiling)

## INCLUDED

Wander panel (vertical)



Wander panel (horizontal wall & ceiling)

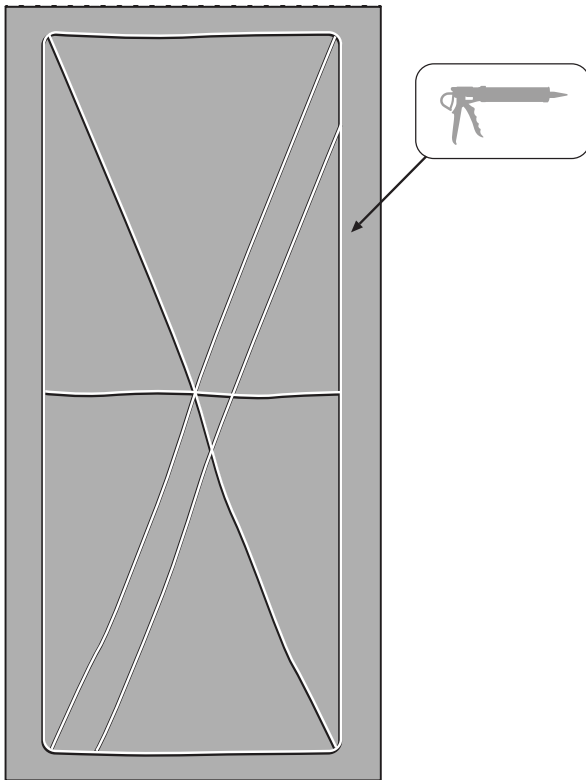




## INSTALLATION GUIDELINES - VERTICAL WALL

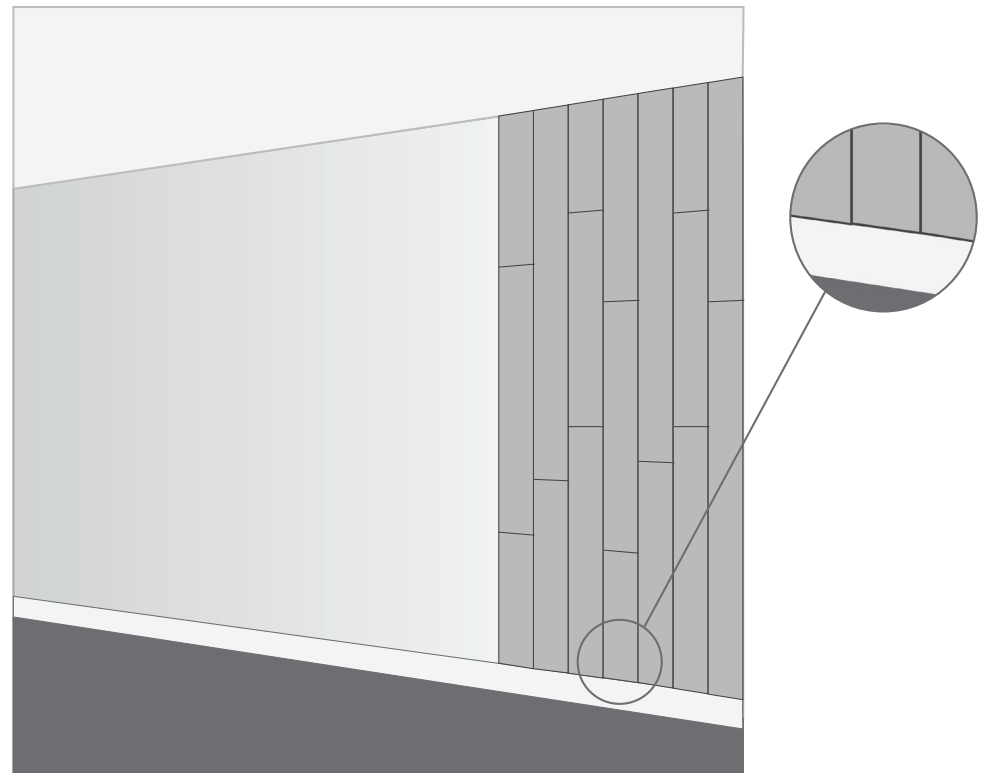
### CONSTRUCTION ADHESIVE

Standard Connection: Construction Adhesive  
(provided by MPS)



### DRY FIT

Before applying adhesive, dry fit the first panel to the wall.



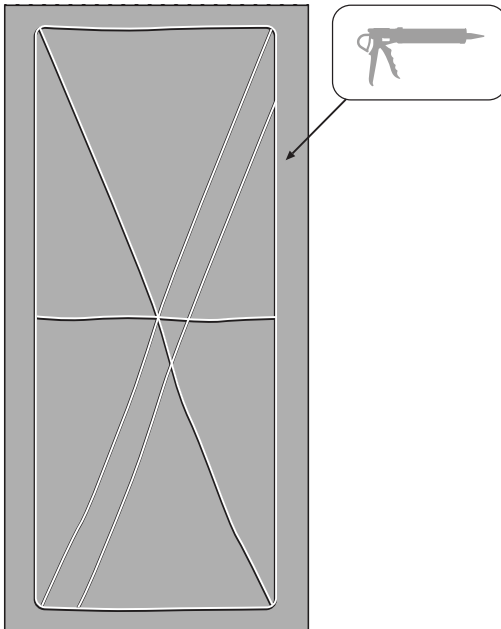
Note: to avoid irregularity, we recommend applying to the top of a baseboard.

\*Ensure the surface is level or product will appear uneven

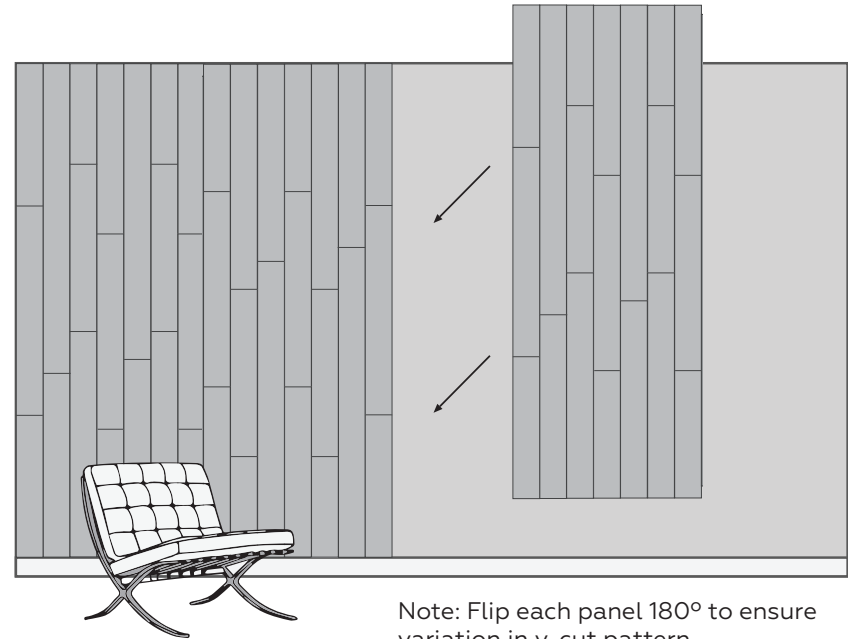


# INSTALLATION GUIDELINES - VERTICAL WALL

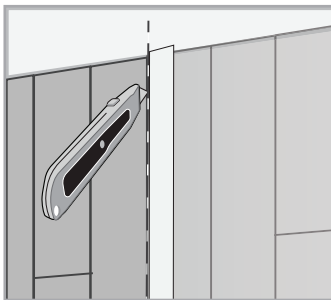
## APPLY CONSTRUCTION ADHESIVE



## HOLD TO WALL FOR 30-60 SECS

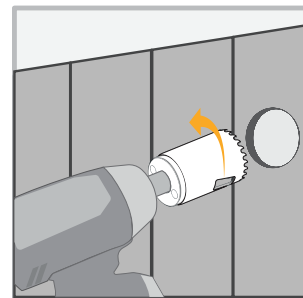


## TRIM AS REQUIRED



Trim panels along the end to fit using a straight edge and cutting tool.

## TRIMMING HOLES

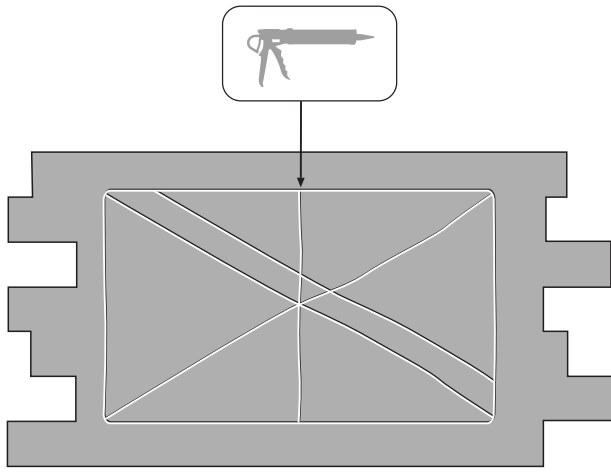


When cutting a circular hole use a hole saw, and run it backwards to minimize pulling.

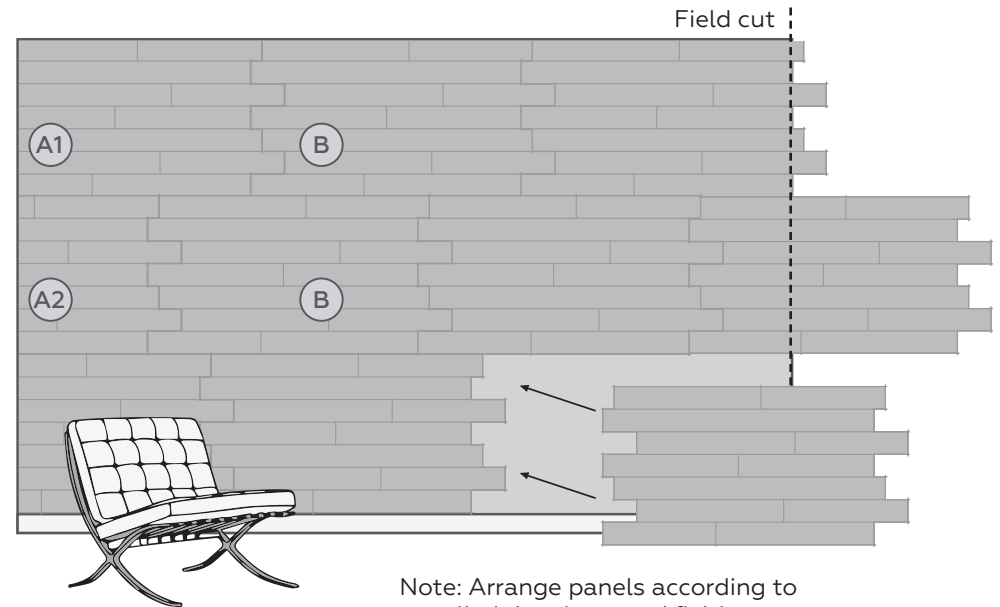


# INSTALLATION GUIDELINES - HORIZONTAL WALL

## APPLY CONSTRUCTION ADHESIVE

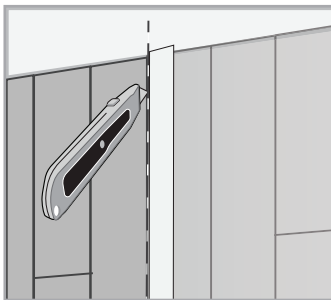


## HOLD TO WALL FOR 30-60 SECS



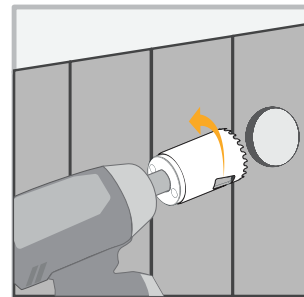
Note: Arrange panels according to supplied drawings, and field cut any panel overhang

## TRIM AS REQUIRED



Trim panels along the end to fit using a straight edge and cutting tool.

## TRIMMING HOLES



When cutting a circular hole use a hole saw, and run it backwards to minimize pulling.



# INSTALLATION GUIDELINES - CEILING

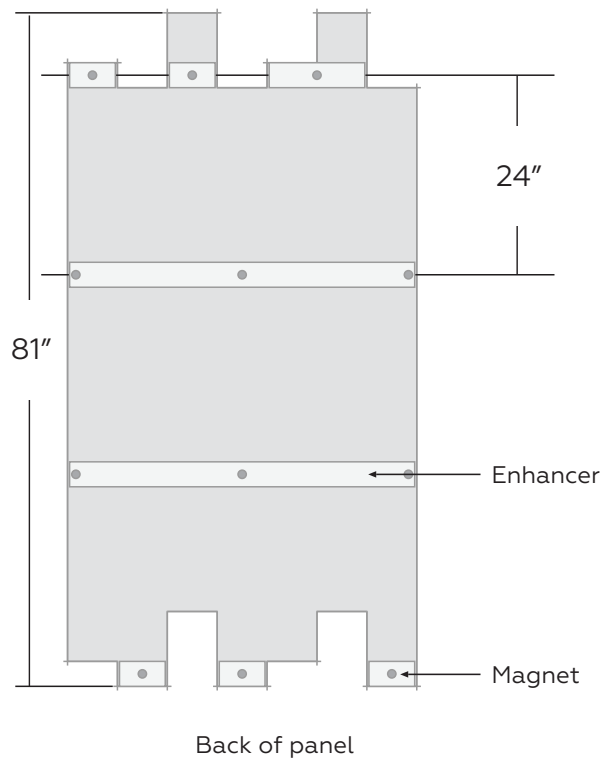
## CONNECTION

Standard Connection: Magnets  
(provided by MPS)

## ADDITIONAL OPTIONS

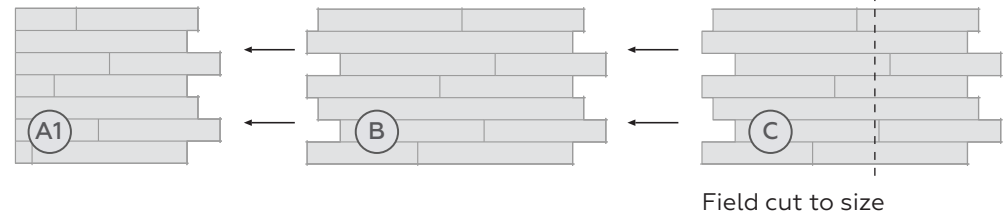
Wood Print: Choose to print woodgrain before  
V-cut (exposing base PET color) or print  
after V-cut

### MAGNETIC CONNECTION

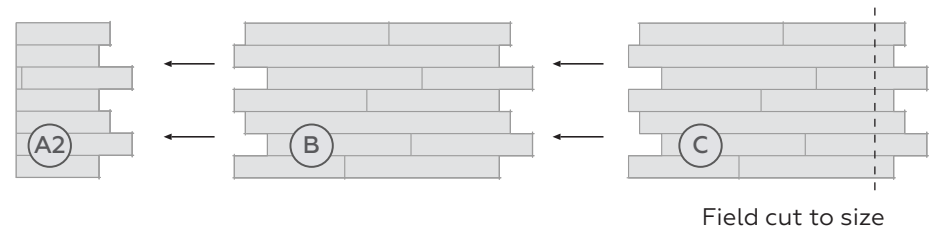


### PANEL LAYOUT

#### FIRST STARTER



#### SECOND STARTER







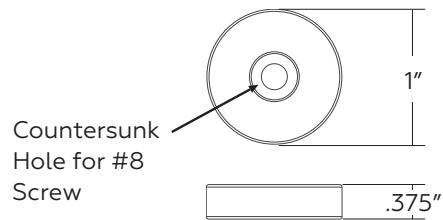
# INSTALLATION GUIDELINES - CEILING

## ATTACH MAGNETS AND CONNECT PANELS TO CEILING

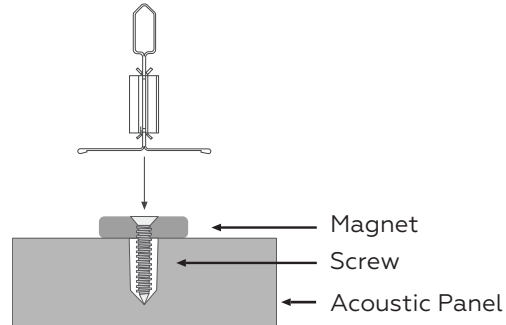


Magnet

Note: Pull off of 50lbs per magnet.



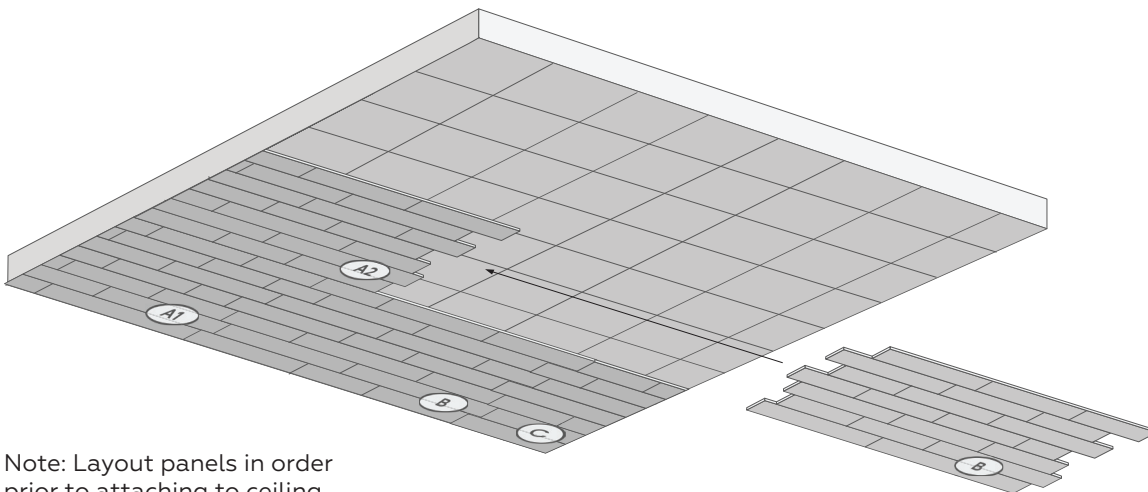
Countersunk Hole for #8 Screw



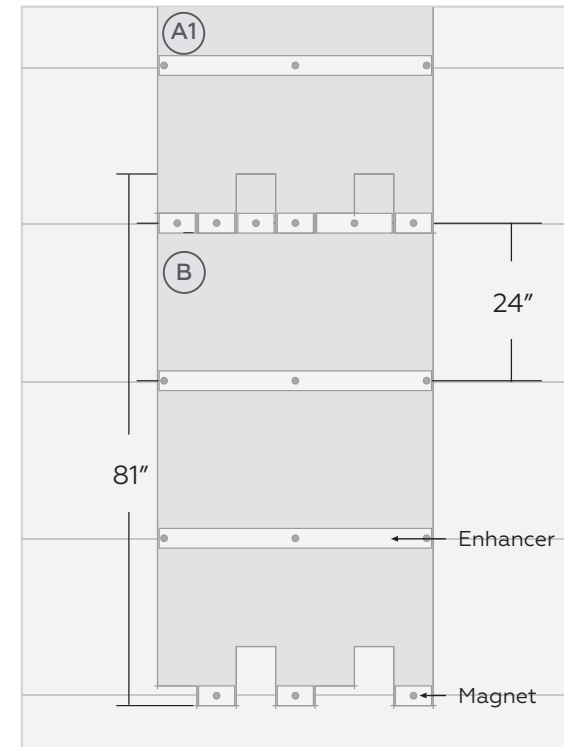
Magnet

Screw

Acoustic Panel

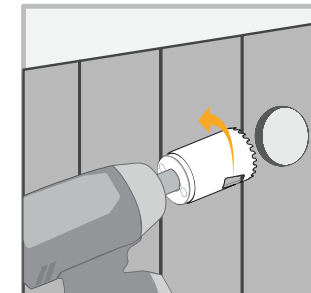


Note: Layout panels in order prior to attaching to ceiling.



Magnets are attached to the horizontal grid-line. Vertical grid-line is for support of the ceiling grid only.

## TRIMMING HOLES



When cutting a circular hole use a hole saw, and run it backwards to minimize pulling.